



~Tails & Trails~

JUNE 2010



From the President's Saddlebag

Howdy,

May was busy and as we head for June there will be more work.

Thanks to the Rousher's for a look into packing. Gene gave us the basics on equipment and how to use it.

At the meeting that evening, we voted to purchase one of the tool packing systems from Vanessa and we hope to use it on the trail work on 4th of July Pass on June 5th. Please sign up, we will need lots of help.

Read the newsletter and get involved. Let's use our horses and get out and play in June.



Boots and saddles boys and girls, it's summer! ~ Bob

PS. If you need help fitting that pack saddle, give Gene or me a call.

JUNE EVENTS

5th – Saturday

National Trails Day Event

4th of July Pass Trail Clearing

Trail Bosses: Joni Lueck, 208-659-9066 Bea Christopherson, 208-651-6748

Please RSVP by June 2nd to Karen as to what lunch item you are bringing.

See Details on Page 4



18th, 19th & 20th – Friday, Saturday & Sunday

Lost Creek Work Project

Trail Boss: Bob Williams, 509-280-7796

Please RSVP by June 16th to Bob Williams at 509-280-7796, leawilliams65@yahoo.com, or Karen Kimball at 208-772-2434

See Details on Page 6

PANHANDLE BACK COUNTRY HORSEMEN GENERAL MEETING May 15, 2010 MINUTES

President Bob Williams called the meeting to order at 7:34 pm.

There were no new members or guests present.

April Minutes were read and corrected and are now a part of the record.

TUNE-UP CLINIC –Bob Williams reported that the vets and brand inspector did a great job and saw about 30 head. Perry's breakfast burritos were great. The club gave a calendar to CeCe as a thank you for the use of her facilities. On a side note, Bob mentioned that the brand inspector was really lenient with us and that you really need to pay attention to the Brand Laws.

NATIONAL TRAIL DAY – June 5th. Karen Kimball got the pipe to Gene Bruce to weld the hitching posts. Bea Christopherson found two good spots to put them up at. Karen, Bea and Glenn Truscott met and went over the Trail Head and Trail 614. We need to dig out the hillside at the gates and put in new posts and bottom rail. Gene Bruce will bring a tractor and post hole digger.

LOST CREEK WORK PROJECT – June 19th & 20th. Bob Williams reported that we will be doing Lost Creek on this weekend rather than deal with motorized vehicles on Memorial Weekend. Come up on Friday. We'll potluck on Friday & Saturday nights. Work on Saturday and do a fun ride on Sunday. Al Linscott will get the directions.

ST JOE TRASPORTOR — Vanessa Edwards gave another presentation on a pack that she has designed at the Packing Clinic earlier that day. The BoD talked about getting one rig this year and another next year. Karen Kimball made a motion that we purchase one now, 2nd by Angela Parson, motion passed. As Debbie Samovar lives close to Vanessa she will pick it up for the 4th of July Work Project.

MUSTANG ADOPTIONS — Bob Williams reported that 6 out of the 10 horses were adopted and that Gerry Cox is a great trainer and his fee is \$600 for training with boarding.

MARIE CREEK MAPS — Karen Kimball has maps of the Marie Creek Trail for \$2.00. Debbie Samovar will

get on onto our web site.


The Defensive Horsemanship CDs and the "*Horse Camping*" book can be checked out by club members, see Debbie Samovar and Bob Williams to check out.

There were 14 members present. Lois Dumont's name was drawn for the \$115 Progressive Pot, which will now carry over to June.

Meeting adjourned at 8:23

Respectfully Submitted,
Deborah Samovar, Secretary

NOTICE:
MEETINGS SWITCH TO
WEDNESDAYS
FOR
JUNE, JULY & AUGUST



Vanessa G. Edwards
208.582.0105

www.longearoutfitter.com vanessa@longearoutfitter.com



Krista Porter DVM
Veterinary Chiropractic
208.651.0973 • kporterdm@yahoo.com

2010 EVENTS



► PBCH Events ► **Regular Meeting** ► **TRAIL BOSS NEEDED** ► **RSVP** ► Non-PBCH Events



JUNE

5th – Saturday
National Trails Day Event
4th of July Pass Trail Clearing
 Trail Bosses

Joni Lueck, 208-659-9066

Bea Christopherson, 208-651-6748

Please **RSVP by June 2nd** to Karen Kimball at 208-772-2434.

8th – Tuesday
Board of Directors Meeting – Open to Members
 Karen Kimball at 208-772-2434

12th – Saturday
 22nd PRVBCH Annual Poker Ride
 At Pee Wee Creek Trailhead
 Jack Lamb 208-263-4772
 www.PRVBCH.com



16th – Wednesday
Regular Meeting – Open to Public

19th & 20th – Saturday &
Lost Creek Work Project, up the CDA River up by Prichard
 Bob Williams, Trail Boss
 Please **RSVP by June 16th** to Bob Williams at 509-280-7796,
 leawilliams65@yahoo.com,
 or Karen Kimball at 208-772-2434

20th – 25th – Sunday – Friday
 Gentlemen on Horseback • www.gentlemenonhorseback.com

JULY

10th – Saturday
 BCHI State Directors Meeting
 Host by PRVBCH at Pee Wee Creek
 www.PRVBCH.com

17th – Saturday
 PRVBCH Competitive Trail Challenge
 Pee Wee Creek Trailhead
 Judy Cagianut 509-447-3374



21st – Wednesday
Regular Meeting – Open to Public
ANNUAL POT LUCK
 6:30 in the Park

AUGUST

7th & 8th – Saturday & Sunday
St Joe Work Project at Red Ives
 Karen Kimball, Trail Boss
 Please **RSVP** to 208-772-2434 or
 jandkkimball@roadrunner.com



18th – Wednesday
Regular Meeting – Open to Public

SEPTEMBER

18th – Saturday
Regular Meeting – Open to Public

OCTOBER

16th – Saturday
Regular Meeting – Open to Public

NOVEMBER

20th – Saturday
Regular Meeting – Open to Public

DECEMBER

4th – Saturday
Christmas Party
 Avondale Country Club
 10745 Avondale Loop Rd, Hayden Lake, ID
TRAIL BOSS NEEDED

TO BE SCHEDULED

Steak Ride
 September or October
 April Linscott, Trail Boss



\$ \$ PROGRESSIVE \$ \$
\$ \$ POT \$ \$



Lois Dumont

was the name drawn
 for the May
 Progressive Pot of

\$115

which will
 carry over to
 JUNE.

June 5th – Saturday
National Trails Day Event
4th of July Pass Trail Clearing

Trail Bosses

Joni Lueck, 208-659-9066

Bea Christopherson, 208-651-6748

Please **RSVP by June 2nd** to Karen Kimball at 208-772-2434
or jandkkimball@roadrunner.com

This is National Trails Day and once again the Panhandle Back County Horsemen and the Nordic Ski Club will be doing a major work project at the 4th of July Pass Recreation Area. We will be clearing trails, installing a horse gate and hitching posts.

For trail clearing the plan is to break off into two groups. One group will clear the trail past the 2nd Hut, the other will working on the "Tunnel", with both groups meeting in the middle. If we have enough people we will also do the Lower Snowshoe Trail.

Gene Bruce and Bob Funke will make the hitching posts and horse gate. Gene will also supply the tractor and cement mixer. The club will bring chainsaws, loppers, pulaskis and other equipment.

UPDATE: Arrive around **8:00** to be ready to work at **9:00**. There will be coffee and danishes available before hitting the trails.

Afterwards Karen Kimball and Debbie Samovar will be manning the Pot-Luck lunch of chili, corn bread, and desert. Debbie will bring the honey butter. **Please RSVP by June 2nd to Karen as to what lunch item you will be bringing.** The club will have their propane stove there to cook and/or keep the chili warm, plates, cup, eating utensils and tables.

Please bring shovels, pulaskis, something to drink, a chair, a camp table if you have one and your camera.

Travel Directions: Coming from west: Take I-90 to 4th of July Recreation Area, exit #28. Stop at stop sign. Turn right and stay right back to parking lot about 1/4 mile. Directions from east: Take the 4th of July Recreation Area exit #28. Stop at stop sign. Turn left and drive over freeway. Then turn right and stay right back to the parking area about 1/4 mile. It's about a 45 minute drive from CDA. Watch for PBCH signage. There is a toilet at trail head, but no water and an outhouse on the trail.



*Perry and Bea work on clearing the trail.
In background Karen Kimball holds the
horses for the group.*

June 18th, 19th & 20th – Friday, Saturday & Sunday

Lost Creek Work Project

Trail Boss: Bob Williams, 509-280-7796

Please **RSVP by June 16th** to Bob Williams at 509-280-7796,
leawilliams65@yahoo.com,
or Karen Kimball at 208-772-2434

Come up on Friday evening and camp. The grill will be on. We'll potluck on Friday & Saturday nights. Start work Saturday morning around 9:30—10:00. We'll be clearing trails and putting up FS signs. Finishing on Sunday morning if needed. Then do a fun ride on Sunday afternoon. Bring your own meat to grill and a camp stool/chair. Bring your own hand tools if you like. **Please RSVP** so we know how many hands we'll have and how much we can do.

DIRECTIONS: From CDA take I-90 east to Kingston exit 43 and Left across overpass to CDA River Rd. Stay on the main road for 27 miles. You will pass Enaville (Snake Pit), the Bumble Bee Cut (5.5 miles), cross the bridge and turnoff for the Old River Rd at 19 miles, stay left at the turn off on the main road to Wallace, at 21 miles you will go past the Thompson Pass turn off, at 26 miles there is a bridge across the river. Near the 27 mile marker there will be a sign that says Lost Creek 1 mile go slow because the road is not well marked there is a stop sign coming on to the highway. About 100 feet up the road is a marker for Rd 442 continue on that road for approx 5 miles.

NOTE: That area is checked for weed free hay.

Gentlemen on Horseback

This is to inform BCH members about a great ride for Gentlemen that is not sponsored by BCH. However, in 2009 there were about 10 BCH members on the ride and it is a great way to see new country.

Since 1948 men from all over the Northwest and beyond have gathered to participate in the "Gentlemen on Horseback" ride. This is a rich tradition that we can be part of. The ride was started when a group of Spokane-area horsemen decided to ride their horses from Spokane to the Okanogan Valley to participate in the Washington Cattlemen's annual convention. Nowadays, we drive our rigs to a designated camping area, set up a base camp and ride out for 5 days to different attractions in the area (lakes, mountain vistas, etc). The rides can range from 10 to 25 miles/day. Riders bring their own horse, camp and hay. The ride is catered so all meals are included in the fee of \$200/man. Riders can also come for fewer days at \$40 per day. This is the pre-registration price for registrations received by June 1, 2010.

This year the ride will be staged in the Calispell Basin area near Chewelah, WA from June 20 to the 25th. This is great camp with meadow, trees for high lining and a creek. Trails go in all directions. Besides the great food, this is an outstanding time of riding and sharing the company of other horsemen.

We also have an annual banquet on Sunday, March 21 at 6:00 PM at the Timber Creek Grill Buffet, 9211 E Montgomery Dr. (Argonne Village) in Spokane Valley. We talk about last year and receive more information on this year's ride as well as a slide show, entertainment and lots of laughs.

For information contact Ken Carmichael 509-466-2225 or kcarmichael@hughes.net or Trail Boss Scott Wiggins at 509-868-1641 or kdlyle@peoplepc.com. Information is also available on www.gentlemenonhorseback.com.



2009 - Nile Creek, WA -- west of Naches,
WA (West of Yakima)

CHAINSAW CERTIFICATION PHOTOS

By Angela Parson



AN IDEA WHOSE TIME HAD COME

The idea for Back Country Horsemen began in my hunting camp in the fall of 1972. By January of '73, the idea took root and the first club pushed through the soil and flourished. I was President of that first club. Perhaps that's sufficient info to establish my credentials for the following:

I care about riding forest trails and I care about horses and their future on public lands in America. That future depends not just on our generation, but the next. Thus, you can say I care about horses and the kids who will ride them today and tomorrow.

That's why I put together an audio-slide show of Kids n' Horses that I think might be of interest to every member of Back Country Horsemen.

It costs nothing for you to watch. Click on

<http://www.rolandcheek.com/kidsnslideshow/index.html>

and see what you think. If the message is worthwhile, then I hope you'll pass the link on to the rest of your members through your newsletter, or just via an email alert.

Samezever,
Roland Cheek

Visit Roland Cheek's website: <http://www.rolandcheek.com/>
or his blog: <http://www.rolandcheek.com/Newcampfireculture/>
Find the Rocky Mountain Sage's secrets to Northern Rockies adventure. Grizzly bears. Elk. Twelve books about the West that was and the West that is. Years of newspaper columns. Listen to hundreds of the long-time guide's outdoors radio show.



Shanda on Rocky, Justin on Flame, Rocky on Buck,
and Brent on Domino.

PBCH HOLDS PACKING CLINIC

By Marilyn Rousher, Photos by Angela Parson

Fortunately for us, Saturday May 15th was basically warm and sunny. There had been some concern that the wet weather would keep folks from attending or that the packing clinic would have to be moved indoors (which could have occurred as there is plenty of room in our barn or one of our two shops).

Eighteen people in all arrived, and this was despite the especially inaccurate directions that I provided. Despite my attending the wonderful compass and GPS class in March, it appears I still have difficulty providing instructions on how to get to my own house. Seems that North and South are a bit interchangeable in my mind, so my advice is - don't let yourself get lost in the wilderness with me, be sure to get lost with Bob Williams, Al Linscott or Jim Kimball.

Vanessa Edwards, the FS stock manager for District 2, found her way to our place and gave a fantastic demonstration on her "St. Joe Transporter," a special pack saddle she devised to carry such items as chain saws, gas, oil, chaps, hard hats and first aid supplies. After packing for so many years she finally became fed up with rifling through her pack bags trying to locate the needed tool to accomplish whatever task was at hand. She wanted something that made her life easier and was easy to work with. After checking around for just the right piece of equipment, she realized it did not exist, so invented the tool that fit the bill for her and her foot crew.

The St. Joe Transporter works well with a Decker saddle and is made of heavy duty leather, held together with brass rings and rivets. Not only is it sturdy, it is easy to use and is quite handsome. She also demonstrated her "St. Joe Carrier" which is an aluminum shelf that hangs from the bars of the pack saddle. It has a hinged system so that the shelf can be pushed up against the pack animal when not in use, or pulled down when needed.

Bob Williams and Gene Bruce brought stock from their places for demonstration purposes. Gene hauled three mules who demonstrated perfect behavior for our packing purposes. Gene reminded us that when looking for the right pack mule, first look for good disposition. His mules get an A+ in my book in that area. He saddled one of the mules so as to show us first-hand how he fits his riding animal out when working in the back country. He also demonstrated how, and why, a pack is put on an animal, how to create a manti (indicating that wife Sharon is better at it than he is), and how to set up a quick release.

Bob brought a pair of adopted BLM donkeys and a cute (by which I mean short enough that I could pack with it) pinto horse. The donkeys were adorable, especially the one he fitted out with a little sawbuck for the first time ever. Bob must have done some good ground work with that little guy as he acted like he had been getting rigged up all his life. Bob explained the use of various ropes, knots and how to use one's packing gear for more than one purpose, a handy thing when weight is an issue in the back country. e He

Obviously, a lot more tips and pointers were given, but if you want to know the particulars you will probably be better informed by asking them than me. I am a newbie to the packing thing after all. But, from a novice's point of view I have to say that once the clinic was done I found myself having the incentive and guts to go out and pack up my own horse in the round pen and take him out on trail so he can learn a new job. According to Gene when teaching a horse how to pack you just have to go out and do it and the animal will get the hang of it. So, watch out fellow PBCHer's as I will be on the trail in no time.

After the clinic, there was a fantastic chili feed, with Dutch oven cornmeal bread, was served with soda, water and coffee. The main contributors to this fun and educational day were: Bob Williams, Gene Bruce, Karen Kimball and Perry Saathoff. I provided balloons, bad directions and a place to have fun.

Hope to show off my packing skills in the very near future.



Vanessa with
"St. Joe Transporter"



"St. Joe Carrier"



"The Gang"



Milo with saddle
and hobbles.



Bob with one of his BLM burros
with sawbuck.



Gene demonstrating
how to hang a leather
pannier.



Gene throwing together
a manti

LUNCH!



2010 CALENDARS

5 CALENDARS LEFT

Instead of trying to sell them as calendars, promote them as **RAFFLE** tickets with a **FREE** calendar.

2010 Winners

January – Dannale Anderson, Cataldo, ID • February – D.M. Wiggins, Eagle ID
March – Lisa Swanson, Lewiston ID • April – Mike Karlin, Lewiston, ID

CLASSIFIED ADS

Tack Room Cleanup:

2 saddles good shape \$250 and \$300.

One set leather saddle bags
very good shape \$50.

Some pads and misc. stuff.

Gene Bruce 699-6426.

See Debbie
to check out
this book.

BOOK REVIEW

Horse Camping by George B. Hatley

This book is very easy to read and more so to understand. The illustrations, knots, equipment etc. are all very well done.

The Panhandle Back Country Horseman chapter has a long and successful history of horse camping, and packing timber and supplies for Forest Service trail work, with our own volunteers doing the work on trails.

The general feeling after reviewing this book is that it is a good addition to anyone's library who use horses to hunt, camp or spend weeks in the wilderness. Plus it is just plain good information for anyone who spends time with horse.

Bob Williams
Panhandle Back Country Horsemen.

TRAIL SENSE for a NEW GENERATION

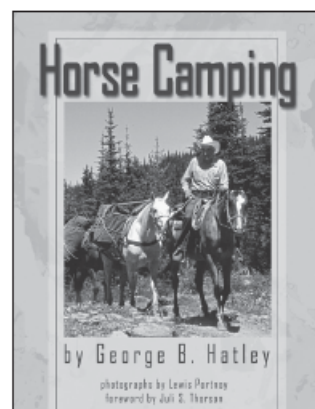
Horse Camping [Revised Edition]

George B. Hatley

Photographs by Lewis
Portnoy

Foreword by Juli S. Thorson

Idaho's consummate
cattle rancher, trail guide,
and Appaloosa Horse
Club founder advises
pack trip enthusiasts
from his practical and
uniquely sage perspective.



Paperback • ISBN 978-0-87422-303-3 • \$24.95

Washington State University Press titles are available
at bookstores, online at wsupress.wsu.edu,
or by phone at 800-354-7360

WSU PRESS

Fine Quality Books from the Pacific Northwest



Deborah Samovar Midnight Graphics

*Specializing in Newsletters, Business Materials
& Print Production*

9176 E Soaring Hawk Lane • Saint Maries, ID • 83861
208-245-3041 • dsamovar@hughes.net



Katie Bane, GRI, ABR®
REALTOR®
realestate@icehouse.net

**CENTURY 21
Beutler & Associates**
1836 Northwest Blvd.
Coeur d'Alene, Idaho 83814
Cell (208) 661-6753
Toll Free (800) 786-4555
Fax (208) 415-0801



Each Office Is Independently Owned And Operated

DAVE LOGUE
President

**Selkirk
Aviation Inc.**

IONI LUECK
Vice-President

FAA Repair Station #LOGR640X

Specializing In Fiberglass Aircraft Parts

email: selkirkav@selkirk-aviation.com
www.selkirk-aviation.com

(208) 664-9589
Voice Mail 1-800-891-7687

3805 Industrial Ave.
Coeur d'Alene, ID 83815

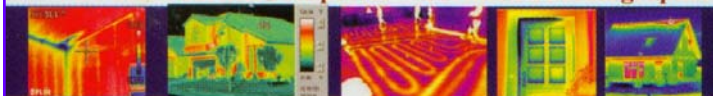


Griffinspect Home Inspections LLC

Full Service Home Inspections ~ Thermal Imaging

Teri Horton

Owner ~ Certified Inspector ~ Certified Thermographer



208-664-9775

212 Ironwood Dr. Suite D 245
Coeur d'Alene Idaho 83814

www.griffinspectllc.com
teri@griffinspectllc.com

PANHANDLE



BACK COUNTRY HORSEMEN

INTERESTED IN A JACKET WITH THE CLUB LOGO ON IT?

Get it at
Monogram Plus
1006 N 4th Street, CDA
208-667-3186

For \$35 they will embroider your jacket or you can select one from their large inventory.
Please note, due to the thread count this logo can not be put on nylon/satin or leather jackets.

The Ranch at Mica Meadows

Full Care Horse Boarding Facility

Stall, Paddock and Pasture Board
Indoor and Outdoor Arenas ~ Riding Trails

Six Miles South of Coeur d'Alene on Highway 95

Manager: Cece Hirschi
208/ 667-1311
208/ 699-6611

9530 S. Highway 95
Coeur d'Alene Id 83814



Idaho State Police

Julie Schwanz
Deputy Brand Inspector
Lewiston District
Idaho Brand Board

PO Box 605
St. Maries, ID 83681

Cell 208-582-0899

Website: www.isp.state.id.us/brands

MUSTANG ADOPTION A SUCCESS

The Wild Mustang Adoption at Mt. View Stables on May 7th and 8th went very well. Six of the ten horses went to new homes. Gerry Cox, trainer and owner gave an excellent demo of gentling a mustang. Lea and Bob gave a demo of gentled, useable mustangs on Pepper and Raven. There also was a demo of mounted cowboy shooting using mustangs. It was a wonderful day even if it rained off and on. ~ Lea Williams



Priest River Valley Back Country Horsemen

22nd Annual Poker Ride Pee Wee Creek June 12, 2010



- Registration:** 8:30 am until Noon
- Time:** First riders out at 9:00 am
Last riders out by Noon. (No exceptions)
- Cost:** Adults: \$17.50 (Lunch and 1 poker hand)
Ages 17 and under: \$7.50
(Lunch only \$7.50)
Additional poker hands - \$5 each
- Trail:** Panoramic views of Priest River Valle
Trail is well groomed with some steep sections.
There are several small bridges to cross.
Some riding experience is required.
Stock water at trail head.
3.5 or 5 hour ride. Your choice.
- Camping:** Camping is free, no hook-ups. Highline posts available.
- Prizes:** \$75 Best Hand - \$25 Worst Hand
- Directions:** Take Hwy 57 N out of Priest River, go 3.5 miles to Peninsula Rd.
Turn right, go across bridge, proceed 4.5 miles, turn left onto gravel
Forest Road #334 (Gleason-McAbee Falls Rd), proceed 1 mile.
Trail head is on the left just past the old gravel pit.
- Sunday:** Join us for breakfast and some fun on Sunday!

FOR MORE INFORMATION

Call: Jack Lamb 263-4772, Dale Schrempp 448-1255 or www.PRVBCH.com

Competitive Trail Ride July 17, 2010 Call:

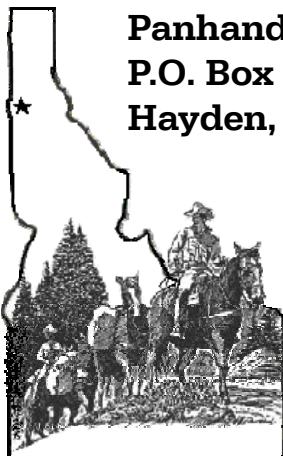
RULES

One rider per horse.
Horses should be shod.
No running horses.
Ride at safe intervals.
No stud horses.
No alcohol or dogs on the trail.
Dogs must be on leashes at campsites.



RULES

Release must be signed.
Under 18 require parental release.
Under 14 to be accompanied by an adult.
No horses left unattended while you ride.
No dogs.



Panhandle Back Country Horsemen
P.O. Box 1903
Hayden, ID 83835

Place
Stamp
Here

**Monthly meetings
are the 3rd**

WEDNESDAY

For June, July & August

**Held in the Dalton
Gardens
City Hall.**

**Ya can
hitch yer
hoss at
6360 North Fourth St**



Place Label Here

Next meetin'....

**Wednesday
JUNE
16th**

**Socializing - 7:00
Meeting - 7:30**

**Enjoy some friendly
conversation, hot coffee
and snacks.**

**Heck fire... you might even
win the Progressive Pot!**



**Sure
would
like to see
ya thar...**

**Ol' Festus &
the crew.**

**Thanks to all of our
members for supporting
Panhandle Back
Country Horsemen.
We couldn't do it without
YOU!**

JUNE

5th – Saturday
National Trails Day Event
4th of July Pass Trail Clearing
Trail Bosses
Joni Lueck, 208-659-9066
Bea Christopherson, 208-651-6748
Please **RSVP by June 2nd**
to Karen Kimball at 208-772-2434.

8th – Monday
**Board of Directors Meeting – Open to
Members**
Karen Kimball at 208-772-2434

12th – Saturday
22nd PRVBCH Annual Poker Ride
At Pee Wee Creek Trailhead
Jack Lamb 208-263-4772
www.PRVBCH.com



16th – Wednesday
Regular Meeting – Open to Public

**19th & 20th – Saturday &
Lost Creek Work Project**
up the CDA River up by Prichard
Bob Williams, Trail Boss
Please **RSVP by June 16th** to
Bob Williams at 509-280-7796,
leawilliams65@yahoo.com,
or Karen Kimball at 208-772-2434

20th – 25th – Sunday – Friday
Gentlemen on Horseback
www.gentlemenonhorseback.com

PANHANDLE BACK COUNTRY HORSEMEN CONTACTS

President:	Bob Williams	509-280-7796
Vice-President:	Al Linscott	208-682-4918
Treasure:	David Rousher	208-667-7452
Secretary:	Debbie Samovar	208-245-3041
Newsletter:	Debbie Samovar	dsamovar@hughes.net
Web Wrangler:	High Desert Design	hdd430@gmail.com
Web Site:	www.pbch.org	