



# ~Tails & Trails~

## MAY 2010



### From the President's Saddlebag

Howdy,

April is in the history books. Some of us have a few rides in this spring.

Due to the high winds and some washouts, the Fun Ride at Marie Creek became a trail work party. However, the rain held off and it was a good day to be out and riding. Plans for other rides are on going and some dates remain in limbo.

The Memorial Day work party at Lost Creek was not going to work. That part of the river will be over run with people so the board postponed that event for June 19<sup>th</sup>-20<sup>th</sup>. The board thought that would be better.

Gene Bruce and I will be putting on the horse packing clinic to be held at Marilyn and Dave Rousher's home on May 15<sup>th</sup> at 1:00 PM. That is the day of our May meeting also. Chili and cornbread will be served. Be sure to come and see if Gene and I can teach.

Thanks to Perry, the vets and brand inspector for a good Tune Up Clinic. Oh boy, those breakfast burritos that Genia and Perry made Yummy.



It is spring, so turn her loose and let 'er buck! ~ Bob



## Saturday, May 15th Packing Clinic

Bob Williams & Gene Bruce, Trail Bosses  
Marilyn and Dave Rousher, Hosts  
Please **RSVP by May 10th**  
to Karen Kimball at 208-772-2434  
or [jandkkimball@roadrunner.com](mailto:jandkkimball@roadrunner.com)



Packing Clinic will be the day of our meeting and open to members and 4-Hers. It will be starting at 1:00 and we'll have demonstrations with different types of pack saddles and bags and boxes to fit on horses and mules. Additionally Vanessa Edwards will give us another demo of her new rigging. After the demonstration we're going to have chili, made by Perry, Al and Karen. Also there will be Dutch oven corn bread and biscuits. Soda and coffee will be provided. Bring a lawn chair. RSVP to Karen Kimball at 208-772-2434. If it is rainy we'll move inside the barn.

The address is: 6856 E. French Gulch Road, Coeur D' Alene

Directions: Take the 15th Street exit off of I-90 and go north about a 1/4 mile to Elm Street. Turn left on Elm at "Jordan's Market" and go up the hill. Elm will become Stanley Hill Road. The top of the hill, Stanley will "T" into Harrison, go right on Harrison and follow the road until it "T's" at French Gulch Road. Turn right on French Gulch and drive up about two miles. On the right hand side is our house. There will be balloons tied out front on the driveway and you can drive straight up the driveway. Park anywhere on the driveway or you can park on Traditional Trail by the split rail fence that parallels the driveway. If you park on Traditional Trail you can climb through the split rail fence and head to the barn.



## PANHANDLE BACK COUNTRY HORSEMEN GENERAL MEETING APRIL 17, 2010 MINUTES

President Bob Williams called the meeting to order at 7:37pm.

New members present: Allison Moate, Wendy Ward and Tracie Anderson

March Minutes were read and are now part of the record.

No Treasures Report was given

MARIE CREEK – Karen Kimball reported that there were 14 riders on Sunday the 11th. Les Ericson, Tom Knoll and Bob & Lea Williams took the bottom trail which had lots of new downfall and they did some pulaski work were there was a bad washout. Fortunately there was a downed log they used to fix it. We received 3 pairs of chain saw chaps from the FS and they are vey bright. It was asked if there are maps of the Marie Creek trail and it was noted that the trail is well marked and easy to follow. Also the FS is putting in a new sign system and our “Maintained by PBCH” sign been shot at. Karen Kimball and Tom & Carla McColly cut out more trees on the 16<sup>th</sup> and picked up lots of trash from some guy who is camping in the meadow. She got photos and his license number and reported him.

TUNE-UP CLINIC – is set for Saturday the 24<sup>th</sup>, Perry Saathoff has the sign up sheet and will have free coffee and \$1.00 breakfast burritos. Bob Williams reported that if you are going into Montana you must have a Brand ID number on your Health Certificate, so the Brand Inspector will be at the clinic at 8:00 in the morning so you can get that info for your certificates. Additionally, WA now needs proof of Coggins testing.

NATIONAL TRAIL DAY – June 5<sup>th</sup>. Bea Christopherson reported she put up the Hiker and Bike poster on the bulletin board at the 1<sup>st</sup> cabin. The main trail is in good shape, but past the 2<sup>nd</sup> hut and the “Tunnel”, clean up is needed and maybe we could go out in two groups and meet in the middle. Joni Lueck suggested we put in a hitching post behind the 2<sup>nd</sup> hut. Karen Kimball made a motion that we use the Lighthouse grant money for hitching posts and horse gates. 2<sup>nd</sup> by Lea Williams, motion passed.

WEED SPRAYING – Karen Kimball will check into spring weed spraying for Marie Creek and 4<sup>th</sup> of July pass.

MEMORIAL WEEKEND WORK PROJECT – Bob Williams reported that rather than head south, we will work up here at Lost Creek. Al Linscott checked the site out and said that there was lots of parking at the Shoshone Camp. Andy Boggs was there last week and put up “Non-Motorized” signs. There is a creek crossing that needs to be repaired and Al will check again to see what we can do. Karen Kimball said we can do puncheons, as bridges

require a NEPA study and an engineer. She’ll get details from Andy for what we can do.

PRESENTATION — Vanessa Edwards gave a present on a pack that she has designed and tested for holding trail clearing gear, including chain saw. It’s made out of 10-12 oz leather, well oiled and with brass hardware. The pack weighs about 30# and fits over a Decker pack saddle. The bags are a ridged design and are great for holding bottles of chain saw gas. She uses the aluminum Zig drink bottles as they don’t break and the gas won’t eat them. The chain saw sheaths can be made to different lengths and the entire rig costs \$875.00

WEED FREE HAY — Karen Kimball still has some bales of weed free timothy hay, 80# for \$7.00. You need weed free at all FS trails, make sure to take the tags/strings with you or bags of certified weed free cubes.

DEFENSIVE HORSEMANSHIP PRESENTATION — The club has two CDs containing two PowerPoint presentations on Defensive Horsemanship that can be checked out. Also the “*Horse Camping*” book can also be checked out.

Angie & Joyce Bissell reported that they went down the 93 corridor in MT to Como Lake. Nice trails out there but most of them won’t allow you to camp at the trail heads with horses. You have to stay in horse designated camps. While they were at Panther Creek they saw elk, deer, wolves, snow geese and mountain goats.

Perry Saathoff made a motion to adjourned, 2<sup>nd</sup> by Bill Clarke, meeting adjourned at 8:50

There were 29 members present. Chelle Caruso’s name was drawn for the \$90 Progressive Pot, which will now carry over to May.

Respectfully Submitted,  
Deborah Samovar,  
Secretary



# 2010 EVENTS



► PBCH Events ► **Regular Meeting** ► **TRAIL BOSS NEEDED** ► **RSVP** ► Non-PBCH Events



## MAY

**7th & 8th** – Friday & Saturday  
Mustang Adoptions – Colville, WA

**8th** – Saturday  
Inland Empire Poker Ride at Fish Trap Lake • www.iebch.com

**9th** – Sunday  
Kootenai County Sheriff's Mounted Posse Mother's Day Ride  
Carolynn 208-290-4630 • Debbie 508-661-2373 • Arnie 208-755-2193

**15th** – Saturday  
**Packing Clinic**

Bob Williams & Gene Bruce, Trail Bosses  
Marilyn and Dave Rousher, Hosts  
Please **RSVP** to Karen Kimball at 208-772-2434.

**Regular Meeting – Open to Public**

**Memorial Weekend** — CANCELED  
New Venue—June 19th & 20th

## JUNE

**5th** – Saturday  
**National Trails Day Event**  
**4th of July Pass Trail Clearing**

Trail Bosses  
Joni Lueck, 208-659-9066  
Bea Christopherson, 208-651-6748  
Please **RSVP** to Karen Kimball at 208-772-2434.

**12th** – Saturday  
PRVBCH Annual Poker Ride  
At Pee Wee Creek Trailhead  
Jack Lamb 208-263-4772

**16th** – Wednesday  
**Regular Meeting – Open to Public**

**19th & 20th** – Saturday &  
**Lost Creek Work Project**, up the CDA River up by Prichard  
Bob Williams, Trail Boss  
Please **RSVP** to 509-280-7796 or leawilliams65@yahoo.com

**20th – 25th** – Sunday – Friday  
Gentlemen on Horseback • www.gentlemenonhorseback.com

## JULY

**10th** – Saturday  
BCHI State Directors Meeting  
Host by PRVBCH at Pee Wee Creek

**17th** – Saturday  
PRVBCH Competitive Trail Challenge  
Pee Wee Creek Trailhead  
Judy Cagianut 509-447-3374

**21st** – Wednesday  
**Regular Meeting – Open to Public**  
**ANNUAL POT LUCK**  
6:30 in the Park

## AUGUST

**7th & 8th** – Saturday & Sunday  
**St Joe Work Project at Red Ives**  
Karen Kimball, Trail Boss  
Please **RSVP** to 208-772-2434 or  
jandkkimball@roadrunner.com

**18th** – Wednesday  
**Regular Meeting – Open to Public**

## SEPTEMBER

**18th** – Saturday  
**Regular Meeting – Open to Public**

## OCTOBER

**16th** – Saturday  
**Regular Meeting – Open to Public**

## NOVEMBER

**20th** – Saturday  
**Regular Meeting – Open to Public**

## DECEMBER

**4th** – Saturday  
**Christmas Party**  
Avondale Country Club  
10745 Avondale Loop Rd, Hayden Lake, ID  
**TRAIL BOSS NEEDED**

## TO BE SCHEDULED

**Steak Ride**  
September or October • April Linscott, Trail Boss

**\$ \$ PROGRESSIVE \$ \$**  
**\$ \$ POT \$ \$**



**Chelle Caruso**  
was the name drawn  
for the April  
Progressive Pot of  
**\$90**  
which will  
carry over to  
MAY.

5th – Saturday  
**National Trails Day Event**  
**4th of July Pass Trail Clearing**  
Trail Bosses

Joni Lueck, 208-659-9066

Bea Christopherson, 208-651-6748

Please **RSVP** to Karen Kimball at 208-772-2434

or [jandkkimball@roadrunner.com](mailto:jandkkimball@roadrunner.com)

This is National Trails Day and once again the Panhandle Back County Horsemen and the Nordic Ski Club will be doing a major work project at the 4th of July Pass Recreation Area. We will be clearing trails, installing a horse gate and hitching posts.

For trail clearing the plan is to break off into two groups. One group will clear the trail past the 2nd Hut, the other will working on the "Tunnel", with both groups meeting in the middle. If we have enough people we will also do the Lower Snowshoe Trail.

Bob Williams and Gene Bruce will make the hitching posts and horse gate. Jerry Shriner will supply the tractor and cement mixer. The club will bring chainsaws, loppers, pulaskis and other equipment.

Arrive around 9:00 to be ready to work at 10:00. There will be coffee and danishes available before hitting the trails.

After wards Karen Kimball and Debbie Samovar will be manning the Pot-Luck lunch of chili, corn bread, and desert. Debbie will bring the honey butter. Please RSVP by May 31<sup>st</sup> to Karen as to what lunch item you will be bringing. The club will have their propane stove there to cook and/or keep the chili warm, plates, cup, eating utensils and tables.

Please bring something to drink, a camp table if you have one and your camera.

Travel Directions: Coming from west: Take I-90 to 4th of July Recreation Area, exit #28. Stop at stop sign. Turn right and stay right back to parking lot about 1/4 mile. Directions from east: Take the 4th of July Recreation Area exit #28. Stop at stop sign. Turn left and drive over freeway. Then turn right and stay right back to the parking area about 1/4 mile. It's about a 45 minute drive from Coeur d'Alene. Watch for PBCH signage. There is a toilet at trail head, but no water and an outhouse on the trail.

**This is National Trails Day – so let's have a big turnout, get lots of work done and take many pictures!**

## National Trails Day® is Saturday, June 5, 2010

American Hiking Society's signature trail awareness program, National Trails Day® (NTD), inspires the public and trail enthusiasts nationwide to seek out their favorite trails to discover, learn about, and celebrate trails while participating in educational exhibits, trail dedications, gear demonstrations, instructional workshops and trail work projects.

NTD also provides an opportunity to thank volunteers, land managing agencies, and outdoor-minded businesses for their support in developing and maintaining trails

### What is National Trails Day® and Why Celebrate NTD?

National Trails Day® is a celebration of trails that evolved from the report of President Ronald Reagan's President's Commission on Americans Outdoors. In 1987, the report recommended that all Americans be able to go out their front doors and within fifteen minutes, be on trails that wind through their cities or towns and bring them back without retracing steps. The recommendation, dubbed Trails for All Americans, became the impetus behind several public and private parties joining American Hiking Society in launching National Trails Day® in 1993.



Trails do not just appear for our enjoyment, it takes many hours of planning, labor, and negotiating to develop them. National Trails Day®, the only nationwide celebration of trails, brings awareness to trails and thanks many people and partners for their support and hard work, including volunteers, land agencies, and outdoor minded businesses. It is also a day to introduce people to the many joys and benefits of trails.

### Why Celebrate Trails?

America's 200,000 miles of trails allow us access to the natural world for recreation, education, exploration, solitude, inspiration, and much more. Trails take us to good physical and mental health by providing us with a chance to breathe fresh air, get our hearts pumping, and escape from our stresses.

The Outdoor Industry Association's annual Outdoor Recreation Participation Study for the United States 2006 reports that 72.1% of all Americans 16 and older (or 162 million people) participate in at least one of the 22 outdoor activities they track, which include: 76.7 million hiking; 13.5 million backpacking; 40.4 million trail running; and 10 million cross country skiing.



*Perry and Bea work on clearing the trail.  
In background Karen Kimball holds the horses for the group.*



*Perry Saathoff and  
Bea Christopherson clearing the Snow Shoe Trail*

# Marie Creek Fun Ride

We had 14 people on the ride, and split into 2 groups. Part of us went the upper route and cut a lot of trees out of the trail from the wind storm of that week. Had lunch just before we started down hill and at the bottom by the creek met up with Les and his group that came up the creek. They did pulaski work on the trail to widen some narrow spots, sawed trees out and worked on some creek crossings. It turned out to be a long working day instead of a fun ride but you never know when the storms are coming. I think everyone had a good time. We had a few over anxious mules but no accidents. The guys wore the new chain say chaps and they work well. Thanks Les for getting things together and everyone who helped.

Tom and Carla McColly and myself rode Marie Cr again on April 16th after the work day and cleared some of the brush and branches of the trail. Also brought a large bag of garbage and tarps from the meadow.

~ Karen Kimball



Members saddling up in the park area.



Jim & Karen Kimball enjoying lunch

Mona Tyler and Kristen Jussila



Jerry Shriner, Jim Kimball and Gene Bruce prepare to trim a fallen tree.



"Bright, Shiny" new chaps.

Bob Funke with pack mule and equipment.

Karen Kimball with bag of trash collect from the meadow.



Kristen reading waiting to ride again.



## Tune-up clinic

We had the tune up clinic on Saturday the 24th at Mica stables. There were 30 horses that got every thing from shots to having there teeth floated. The brand inspector was also there doing inspections for anyone needing them. There were no problems and all went smooth, thanks to the Vets and the Brand Inspector. I want to thank Cece for letting us use the great facilities at Mica stables. Now that your horses are ready to go, hit the trails and have some fun!!

~ Perry Saathoff, Trail Boss



Dr. Krista Porter (right) and her assistant, vaccinate one of Gene Bruce's mules.



Dr. Sonnicant Gilbert floats Marilyn Rousher's horse while her daughter watches.



April Linscott holds her horse and talks to Bob Williams and Perry Saathoff, while waiting her turn.



Gene Bruce and his mule wait while the Doc prepares the vaccines.

## COMPASS & GPS TRAINING



Jim Kimball explaining declination to a crowded house at Dalton Gardens City Hall.

Members trying to get their coordinates on their GPS



Bob Williams, Marilyn Rousher and Gene Bruce working on reading a compass.



Members out in the park learning how to get a bearing on their compass.





## ADOPT A LIVING LEGEND

May 7 & 8, 2010 – Colville, WA

Mountain House Stables

775 Old Arden Hwy • Colville, Washington 99114 • (509) 685-1977

10 head mixed ages and demonstrations by trainer and facility owner Gerry Cox

Friday (5/7)

12:00 P.M. – 6:00 P.M.

Wild Horse Gentling Demo – Midday

4:00 P.M. – 6:00 P.M. Preview & Registration

Saturday (5/8)

8:00 A.M. – 5:00 P.M.

Preview & Registration 8:00 A.M. – 12:00 P.M.

12:00 P.M. – 12:30 P.M. Silent Bid Adoptions Begins

Loading to follow

Possible Demo – Midday

**DIRECTIONS:** From I-90 go North at Exit 281 - US-395/Newport/Colville/US-2 N. Continue North on US-395 for approximately 66.5 miles. Turn right at Old Hwy NW/Old Arden Hwy. Go 0.2 mile, destination will be on the right.

### BOOK REVIEW

*Horse Camping* by George B. Hatley

This book is very easy to read and more so to understand. The illustrations, knots, equipment etc. are all very well done.

The Panhandle Back Country Horseman chapter has a long and successful history of horse camping, and packing timber and supplies for Forest Service trail work, with our own volunteers doing the work on trails.

The general feeling after reviewing this book is that it is a good addition to anyone's library who use horses to hunt, camp or spend weeks in the wilderness. Plus it is just plain good information for anyone who spends time with horse.

Bob Williams  
Panhandle Back Country Horsemen.

### TRAIL SENSE for a NEW GENERATION

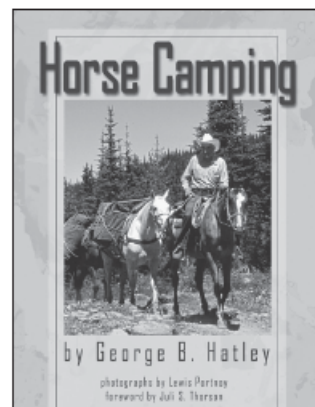
**Horse Camping**  
[Revised Edition]

George B. Hatley

Photographs by Lewis Portnoy

Foreword by Juli S. Thorson

Idaho's consummate cattle rancher, trail guide, and Appaloosa Horse Club founder advises pack trip enthusiasts from his practical and uniquely sage perspective.



**Paperback • ISBN 978-0-87422-303-3 • \$24.95**

Washington State University Press titles are available  
at bookstores, online at [wsupress.wsu.edu](http://wsupress.wsu.edu),  
or by phone at 800-354-7360

**WSU PRESS**

Fine Quality Books from the Pacific Northwest



## Deborah Samovar Midnight Graphics

*Specializing in Newsletters, Business Materials  
& Print Production*

9176 E Soaring Hawk Lane • Saint Maries, ID • 83861  
208-245-3041 • dsamovar@hughes.net



Katie Bane, GRI, ABR®  
REALTOR®  
realestate@icehouse.net

**CENTURY 21  
Beutler & Associates**  
1836 Northwest Blvd.  
Coeur d'Alene, Idaho 83814  
Cell (208) 661-6753  
Toll Free (800) 786-4555  
Fax (208) 415-0801



Each Office Is Independently Owned And Operated

DAVE LOGUE  
President

**Selkirk  
Aviation Inc.**

IONI LUECK  
Vice-President

FAA Repair Station #LOGR640X

*Specializing In Fiberglass Aircraft Parts*

email: selkirkav@selkirk-aviation.com  
www.selkirk-aviation.com

(208) 664-9589

Voice Mail 1-800-891-7687

3805 Industrial Ave.

Coeur d'Alene, ID 83815

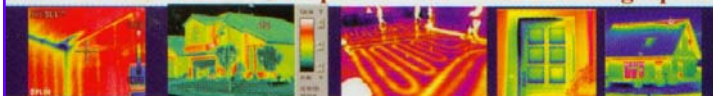


## Griffinspect Home Inspections LLC

Full Service Home Inspections ~ Thermal Imaging

**Teri Horton**

Owner ~ Certified Inspector ~ Certified Thermographer



208-664-9775

212 Ironwood Dr. Suite D 245  
Coeur d'Alene Idaho 83814

www.griffinspectllc.com  
teri@griffinspectllc.com

**PANHANDLE**



**BACK COUNTRY HORSEMEN**

## INTERESTED IN A JACKET WITH THE CLUB LOGO ON IT?

Get it at  
Monogram Plus  
1006 N 4th Street, CDA  
208-667-3186

For \$35 they will embroider your jacket or you can select one from their large inventory.  
Please note, due to the thread count this logo can not be put on nylon/satin or leather jackets.

## The Ranch at Mica Meadows

Full Care Horse Boarding Facility

Stall, Paddock and Pasture Board  
Indoor and Outdoor Arenas ~ Riding Trails

Six Miles South of Coeur d'Alene on Highway 95

Manager: Cece Hirschi  
208/ 667-1311  
208/ 699-6611

9530 S. Highway 95  
Coeur d'Alene Id 83814



## Idaho State Police

**Julie Schwanz**  
Deputy Brand Inspector  
Lewiston District  
Idaho Brand Board

PO Box 605  
St. Maries, ID 83681

Website: www.isp.state.id.us/brands

Cell 208-582-0899

# 16th annual POKER RIDE

BACKCOUNTRY HORSEMEN  
OF WASHINGTON INC.  
INLAND EMPIRE CHAPTER  
www.iebch.com

The trail is well marked over relatively level but rocky ground and varies in difficulty. Some experience required.

FUNDRAISER

**PRE-REGISTRATION MUST BE RECEIVED BY MAY 5**  
Print out this form, fill it out and mail, with payment, to: Ken Carmichael, 10804 W. Seven Mile Rd., Spokane WA 99224

same number... 17 & under ride free, but please register them

#1 NAME \_\_\_\_\_

\* please print clearly \*

REGISTRATION \$15.00

☐ if 17 & under, check here and please enter \$0

Note: above registration price includes \$5 BLM user fee / rider

EXTRA POKER HANDS \_\_\_\_\_ x \$5 = \$ \_\_\_\_\_

optional, 108 over only

BOX LUNCH \$5.00

optional

Ham OR Turkey

Tax Deductible Donation to IEBCH = \$ \_\_\_\_\_

#1 NAME TOTAL \$ \_\_\_\_\_

Your mailing address

Street \_\_\_\_\_

City \_\_\_\_\_

State \_\_\_\_\_

Zip \_\_\_\_\_

Phone (\_\_\_\_\_) \_\_\_\_\_

\* please print clearly \*

Your mailing address

Street \_\_\_\_\_

City \_\_\_\_\_

State \_\_\_\_\_

Zip \_\_\_\_\_

Phone (\_\_\_\_\_) \_\_\_\_\_

## Mission Statement

The purpose of the Inland Empire Chapter of the Back Country Horsemen of Washington is to preserve and enhance the right to use horses and mules for recreation on public lands.

print out additional forms for additional riders

TOTAL AMOUNT ENCLOSED \$ \_\_\_\_\_

Pre-registration fee is non-refundable

Make check payable to Back Country Horsemen

Note: the above registration price includes the BLM user fee

A liability release form MUST BE SIGNED by all participants at event check-in.

## prizes

Best hand.....\$150 Gift Certificate  
2nd Best Hand.....\$100 Gift Certificate  
Loball.....\$50 Gift Certificate

Must be 18 years of age or older to win above prizes

\*Winner will choose from a selection of stores for the Gift Certificate  
Numerous door prizes

## the facts

Date May 8, 2010  
Time First rider out at 9:00am  
Last rider out by noon  
Location BLM Land at Fish Trap Lake  
Length of Ride 3-4 hours  
(extended route available - entrance closes at 2pm)  
Cost Pre-registration RECEIVED BY May 5  
\$15 per rider\* (includes 1 poker hand)  
\$5 for each additional hand

Registration May 6-8

\$20 per rider\* (includes 1 poker hand)  
\$5 for each additional hand

\*17 & under ride free but please register them

\*Note: above registration price includes \$5 BLM user fee / rider

## overnight camping

Available at no additional cost

## t-shirts

Purchase at registration for \$12 each

## food

Box lunch for the trail - \$5 each  
Ham or turkey deli sandwich, chips, cookie and drink.  
Prefer order on pre-registration. Limited availability at event.  
Also available for purchase at station #4: drinks

## safety rules

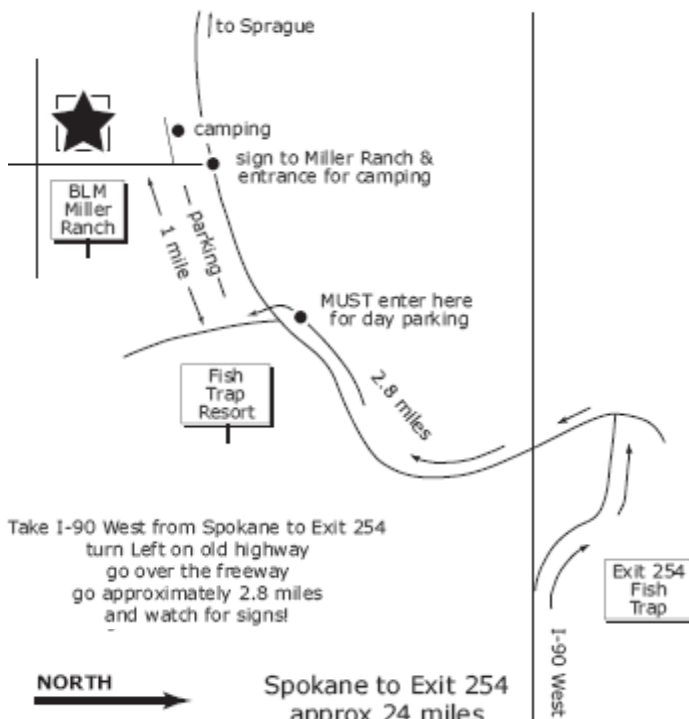
- one rider per horse
- horses should be shod
- ride at safe distance
- be courteous when passing other riders
- no running horses
- no alcoholic beverages on trail
- all riders must sign a liability release
- minors must be accompanied by Parent or Guardian
- no stallions please
- no dogs please
- no littering please

## for information contact

Ken Carmichael • 509-466-2225 • inlandempire.bch@gmail.com

The trail is well marked over relatively level but rocky ground and varies in difficulty. Some experience required.

## DIRECTIONS TO TRAIL HEAD



Kootenai County  
Sheriff's Mounted Posse  
Presents our Annual ...

*Mother's Day*

# Pride Ride



Trail Ride  
Farragut State Park

Great marked trails! Maybe different than what  
you're used to...Long Loop; Short Loop;  
Combination of trails and old roads

Lots  
of  
**Great  
Prizes**

May 9<sup>th</sup>, Sunday

Riders out starting at 9:00 a.m.  
with last rider out at 11:00 a.m.

Halfway Point with  
Snacks for Rider & Horse  
Lunch served as you come back in.

Yes!!!  
The Famous  
Spaghetti lunch  
with salad  
garlic toast  
and...  
dessert!!

## DIRECTIONS

Take Hwy. 95  
North of  
Coeur d' Alene  
18 miles to  
Hwy 54 at Athol.

Turn east and head  
to gate to Farragut  
State Park

DO NOT STOP  
at the office.  
Proceed directly to  
trail head following  
the signs.

For everybody's safety ...  
Please no Alcohol, Guns,  
Dogs or Stallions!

So ride as you come! The trail is marked  
and Posse Members will ride the trail too!

Adults \$19.00

Family (2+) \$30.00

Parents and Children

Includes Lunch & Prize Entry  
and Park Entrance Fee!!!

Call for details:  
Carolynn (208) 290-4630  
Debbie (208) 661-2373  
Arnie (208) 755-2193



## 2010 Calendar



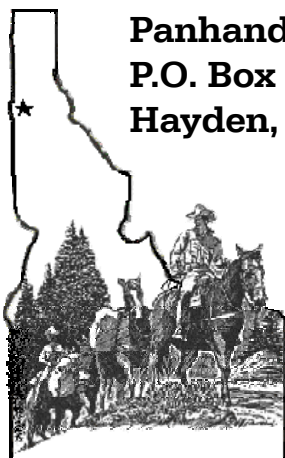
## 2010 CALENDARS

We still have 22 calendars left.

Instead of trying to sell them as calendars, promote them as  
**RAFFLE** tickets with a FREE calendar.

### 2010 Winners

January – Dannale Anderson, Cataldo, ID • February – D.M. Wiggins, Eagle ID  
March – Lisa Swanson, Lewiston ID



## Panhandle Back Country Horsemen

P.O. Box 1903

Hayden, ID 83835

Place  
Stamp  
Here

Monthly meetings  
are the 3rd

## SATURDAY

Held in the Dalton  
Gardens  
City Hall.

Ya can  
hitch yer  
hoss at  
at 6360 North Fourth St



Place Label Here

Next meetin'....

## Saturday MAY 15th

Socializing - 7:00  
Meeting - 7:30

Enjoy some friendly  
conversation, hot coffee  
and snacks.

Heck fire... you might even  
win the Progressive Pot!



Sure  
would  
like to see  
ya thar...

Ol' Festus &  
the crew.

## MAY

7th & 8th – Friday & Saturday  
Mustang Adoptions – Colville, WA

8th – Saturday  
Inland Empire Poker Ride  
at Fish Trap Lake • [www.iebch.com](http://www.iebch.com)

9th – Sunday  
Kootenai County Sheriff's Mounted Posse  
Mother's Day Ride at Farragut Park  
Carolynn 208-290-4630  
Debbie 508-661-2373 • Arnie 208-755-2193

### 15th – Saturday Packing Clinic

Bob Williams & Gene Bruce  
Trail Bosses  
Marilyn and Dave Rousher, Hosts  
Please **RSVP** to Karen Kimball  
at 208-772-2434.

15th – Saturday  
Regular Meeting – Open to Public

Memorial Weekend — CANCELED  
New Venue—June 19th & 20th

## JUNE

5th – Saturday  
National Trails Day Event  
4th of July Pass Trail Clearing  
Trail Bosses  
Joni Lueck, 208-659-9066  
Bea Christopherson, 208-651-6748  
Please **RSVP** to Karen Kimball  
at 208-772-2434

Thanks to all of our  
members for supporting  
Panhandle Back  
Country Horsemen.  
We couldn't do it without  
**YOU!**

## PANHANDLE BACK COUNTRY HORSEMEN CONTACTS

President:	Bob Williams	509-280-7796
Vice-President:	Al Linscott	208-682-4918
Treasure:	David Rousher	208-667-7452
Secretary:	Debbie Samovar	208-245-3041
Newsletter:	Debbie Samovar	<a href="mailto:dsamovar@hughes.net">dsamovar@hughes.net</a>
Web Wrangler:	High Desert Design	<a href="mailto:hdd430@gmail.com">hdd430@gmail.com</a>
Web Site:	<a href="http://www.pbch.org">www.pbch.org</a>	