



~Tails & Trails~

APRIL 2010

Happy
Easter



From the President's Saddlebag

Howdy,

March is about gone and so far it has been a good month. Our ride at Fish Trap had thirty riders and two of those were the past state president of Washington BCH, Bob Gish and his wife Vicki. There were two follow up sessions on compass and GPS. We lost a few each subsequent week, but Jim did a heck of a job, along with Al Linscott, on compass reading.

Chainsaw certification was on the 27th at Terry Sverdsten's. George Miller was the teacher. Marion Crumb lead a ride at Farragut State Park on the 28th.

Marie Creek Fun Ride will be on April 11th. We will take one chainsaw as Les already cut the down stuff last week. Come to the April meeting on the 17th, it sounds like we could learn something about packing tools from member Vanessa Edwards.

Boots and saddles and warm riding clothes. Go light on the land but plan to be safe. ~ Bob



Marie Creek Clearing



Our yearly cleaning project for Marie Creek was scheduled for Saturday, April 10th. As it turns out, member Les Erickson rode the trail on March 20th and cut out the downed trees that he came across and the ones hikers told him about. **WAY TO GO LES - THANKS!!**



Marie Creek Trail Fun Ride

Sunday, April 11th

Les Erickson, Trail Boss, 208-773-6482

This is our annual ride of the best trail in the CDA area, which our chapter developed. **Please arrive at the trail head and be saddled up, ready to ride by 10:30 AM.** Rain gear is suggested. This is about a 3-4 hour ride of intermediate difficulty. We'll spread people out to avoid crowding so you can appreciate the scenery. Members and perspective members only!! **Rules—NO DOGS.** We usually get a good crowd, so be there early as you may have to park up the road if you are late. Bring a lunch!

DIRECTIONS: Off of I-90, take the Harrison/Wolf Lodge exit and go to the north side of the Interstate to the stop sign and take a right, heading east on the frontage road. Go left on Wolf Lodge Cr Rd, now heading north. At the next intersection go left continuing up Wolf Lodge Cr Rd to the intersection of the Marie Cr Rd. Right on Marie Cr RD and look for the PBCH sign into the trailhead. If you start climbing up hill you've gone too far.....



Members on the 2006 Ride

PACK SADDLE DEMO

Vanessa Edwards, Long Ear Outfitter

Saturday, April 17th 7:30 PM

Chapter member Vanessa Edwards has designed and field tested an equine pack to hold chainsaws and hand tools. Come to the April meeting to see how this pack works and learn how it will make your work projects go easier.



PANHANDLE BACK COUNTRY HORSEMEN GENERAL MEETING MARCH 20, 2010 MINUTES

President Bob Williams called the meeting to order at 7:35 pm.

February Minutes were read. Karen Kimball made a correction that Priest River, not Selkirk Valley, is the chapter that may be interested in co-opting the 2011 convention with us. Minutes are now a part of the record.

TREASURES REPORT – Debbie Samovar reported that there was \$5,003.36 in checking, \$2,293.92 in savings, \$14,894.18 in a CD, for total assets of \$22,191.46. Bills to be paid were: \$42.40 to Karen Kimball for coffee, refreshments, and training copies. Terry Sverdsten made a motion to pay the bills, 2nd by Lea Williams, motion passed.

UPCOMING EVENTS – Chainsaw Certification is on Saturday the 27th. 10:00 sharp at Terry Sverdsten's place, followed by a chili feed at noon. The Farragut Park Ride is on Sunday the 28th at 10:30 and there is a \$5.00 day use fee.

E-MAILS RECEIVED: Rod Parks, Outdoor Show on the 26th, 27th and 28th in Lewiston.

Park & Rec is down to 2 people. Dave Claycomb and Kathy Mur for Trails, off road and motor bikes.

Robert Wuest reported that Tracy Gravelle applied for and got a \$75K grant for the St Joe. Suggested we apply to her for new chainsaws, weed eaters, etc. Have till Jan 2011 to get our grant in. Also Parks & Rec only got 40% of the grant money they requested, of which Andy Boggs should get his funds for the projects we are going to work on.

NATIONAL TRAIL DAY – June 5th. Joni Lueck suggested we work with the Nordic Ski Club again and do some clearing on the 4th of July Pass. Bea Christopherson said it looks good. Bob Williams will get in touch with Jeff Harvey. Bea reported that the kiosk is gone and that the Boy Scouts put up new signs. Trail Blazer Magazine would like us to send photos and an article on the work we do.

TRAILER STICKER – BCHI president Phil Ryan sent an e-mail to all the chapters, that per the state BoD meeting, BCHI is to send a rescind letter to the Horse Council, stating that a vote was taken not to support the bill as it is written, with specific regards to sections on Livestock Recreation Fund, Use Of Moneys and Penalties. Robert Wuest commented that all the special use stickers went to committee this last wee and they are going to have user fees for everyone – bird watchers, hikers, etc. A State Director appointed by the Governor, wants state parks to be self supporting and put in a grant for \$100K to study how state parks impact local communities.

RED IVES – Karen Kimball report that the August 7th & 8th dates are OK. Their funds were cut so we will only be getting \$800, but will also be getting chaps. For the Fernan project we will get \$500 as their district had a \$34K cut.

ASSETS TRAILER – Gene and Sharon Bruce made up a list of all the equipment and kitchen supplies we have in the trailer. When you get anything from the trailer there is a check out list inside for you to sign items in and out. Plus this will help us keep track of when we need to replace consumables.

BOOK REVIEW – Washington State University Press sent us a complimentary copy of their book "*Horse Camping*" by George Hatley for us to review. Bob Williams said it is very good, down to earth, with illustrations, recipes, info on trail rides and outfitters and is an easy. George worked on western movies and is the founder of the Appaloosa Registry in Moscow.

PACKING CLINIC - Karen Kimball reported that we need to set a date for a club packing clinic and that David Rousher wants us to do it at his place and has packs. Will discuss at the BoD meeting.

FISH TRAP RIDE - Karen Kimball said there were 30 riders. David stayed back at camp and had hot coffee waiting for them. There were a couple of wrecks. Lea Williams was wearing cotton clothing and her horse rolled in the water/mud, getting her soaked. In less than 30 minutes she had hypothermia. Marilyn Rousher gave her outer pants to Lea as she was wearing tight fitting, wicking long Johns. Bob said you should always carry a water proof bag with a change of clothes in it.

MARIE CREEK – Len Smith of the Spokane Mountaineers hikes the trail and informs us of downed trees. He sent us a list of what's down, size and location. Most of it is up above. Les Erickson said he rode the trail today and cut all of that out. While he was doing it hikers reported where there were other trees down. As we don't have to clear the trail, we could do the fun ride instead. Bob asked Les if he would trail boss the ride on the 10th since he knows what shape the trail is in. Several of the members asked if the ride could be on Sunday, the 11th. So it is now on Sunday, be ready to ride at 10:30 and bring a lunch.

BCHI BoD MEETING - Karen Kimball report that there was a vote on the Trailer Sticker, 10 nays and 2 yeas. Calendar sales are going slow this year with a few chapters having real problems selling. It was noted that no other project has brought in so much money. It was voted to do another calendar for 2011 and maybe printing less. A Hiking Poster was created from the successful bike poster. Discussions on how to get hikers to talk is to tell them to count to 10 or tell the horse how pretty it is. This year's convention will be in Grangeville Nov. 5th & 6th. Priest River is doing the July BoD meeting, so they haven't gotten back to us on the 2011 convention. Lea Williams made a motion that we host the 2011 Convention and Priest River can tag on if they want, 2nd by Angela Parsons, motion passed. The convention committee will consist of Karen Kimball, Lea Williams, Marilyn Rousher, Angela Parsons and Debbie Samovar.

TUNE-UP CLINIC – A sign up sheet was passed around. List your name and the number of horses you want done for each service. The sheet will be available again at the April meeting. Perry will be doing breakfast burritos again.

Meeting adjourned at 8:42

There 22 members present. Brad Porter's name was drawn for the \$63 Progressive Pot, which will carry over to April.

Respectfully Submitted,
Deborah Samovar, Secretary

2010 EVENTS



► PBCH Events ► **Regular Meeting** ► **TRAIL BOSS NEEDED** ► **RSVP** ► Non-PBCH Events



APRIL

10th – Saturday
Inland Empire Mustang Horse Club Ride
Bob Williams, Trail Boss, 509-280-7796 or leawilliams65@yahoo.com

11th – Sunday
Marie Creek Trail Fun Ride
Les Erickson, Trail Boss, 208-773-6482

17th – Saturday
Regular Meeting – Open to Public

24th – Saturday
Tune-Up Clinic
at Mica Meadows Ranch, S. Hwy 95
Perry Saathoff, Trail Boss
Please **RSVP** to 208-667-7452 or saathoff50@yahoo.com

MAY

1st & 2nd – Saturday & Sunday
Remount Ride
Jerry & Diane Shriner
Please **RSVP** to 208-667-2949 or jerryshriner@gmail.com

7th & 8th – Friday & Saturday
Mustang Adoptions – Colville, WA

8th – Saturday
Inland Empire Poker Ride at Fish Trap Lake • www.iebch.com

15th – Saturday
Regular Meeting – Open to Public

Memorial Weekend
29th, 30th & 31st – Saturday, Sunday & Monday
Larrabee Corrals Work Project, Craig Mt, south of Lewiston
Bob Williams, Trail Boss
Please **RSVP** to 509-280-7796 or leawilliams65@yahoo.com

JUNE

5th – Saturday
National Trails Day Event
4th of July Pass Trail Clearing
Trail Bosses
Joni Lueck, 208-659-9066
Bea Christopherson, 208-651-6748

16th – Wednesday
Regular Meeting – Open to Public

20th – 25th – Sunday – Friday
Gentlemen on Horseback • www.gentlemenonhorseback.com

JULY

10th – Saturday
BCHI State Director Meeting at Pee Wee Creek

21st – Wednesday
Regular Meeting – Open to Public
ANNUAL POT LUCK
6:30 in the Park

AUGUST

7th & 8th – Saturday & Sunday
St Joe Work Project at Red Ives
Karen Kimball, Trail Boss
Please **RSVP** to 208-772-2434 or jandkkimball@roadrunner.com

18th – Wednesday
Regular Meeting – Open to Public

SEPTEMBER

18th – Saturday
Regular Meeting – Open to Public

OCTOBER

16th – Saturday
Regular Meeting – Open to Public

NOVEMBER

20th – Saturday
Regular Meeting – Open to Public

DECEMBER

4th – Saturday
Christmas Party

TO BE SCHEDULED

Club Packing Clinic – **TRAIL BOSS NEEDED**
Steak Ride in the fall – **NEED PLACE & TRAIL BOSS**

\$ \$ PROGRESSIVE \$ \$
\$ \$ POT \$ \$



Brad Porter

was the name drawn
for the March
Progressive Pot of

\$63

which will
carry over to
APRIL.

TUNE-UP CLINIC

Saturday, April 24th

The time has come to tune up that horse and hit the trails. The tune up clinic for our horses will be on the 24th of April. Perry and Genia Saathoff will be trail bossing this event. The place is Mica Stables: go south on 95 from CDA, at the top of the first long hill start looking for the PBCH signs. The Vet will start at 8:00 a.m. When you arrive, make sure you sign up with me; horses will be seen in the order that you have signed up. All horses must be checked in by 10:30 a.m.

THIS IS A MEMBERS ONLY EVENT

We will have Breakfast Foods for sale and free coffee.

The costs are as follows:

6 month coggins/health certificate = \$36

5-way (eastern and western encephalitis, tetanus, influenza and rhino) = \$27

4-way (eastern and western encephalitis, tetanus, and influenza) = \$19

3-way with WNV (eastern and western encephalitis, tetanus) = \$28

WNV = \$25

Alternative combination - good for horses that need the protection of local nasal immunity when exposed to high volumes of other horses.

Intranasal strangles = \$24

Intranasal Influenza = \$19

Dr. Sonni Gilbert has offered to provide **routine** floats for \$80 plus sedation, (normally \$10-25 depending on the horse) if there is enough interest.

RSVP by April 17th

There will be a sign-up sheet at the April 17th meeting

Contact Perry Saathoff at (208) 691-6452 or saathoff50@yahoo.com.

If you don't RSVP we cannot guarantee you will receive the shots you need.

WHEN YOU RSVP IT MEAN'S THAT YOU'LL BE THERE !!!!!

Mustang Horse Club ride on April 10th.

Mustang Horse Club will have a ride on April 10th at the Riverside State Park, Trail Town. Foot in the stirrup at 10.00 AM. Doesn't require a mustang to come ride with us. Invite your friends. We will have FUN. Bring a lunch. Rain or shine come and ride.

DIRECTIONS: From I-90 take exit 280A (Maple street exit)—Go north. Get into the left lane and turn left at 2nd. Second will turn into Sunset blvd and you'll cross a bridge. Turn right on Government Way. Go past the cemetery, past Spokane Falls Community College (you'll start seeing signs directing you to the equestrian area). Follow the signs to the equestrian area. You'll turn right at Aubrey L. White Dr, and then right into the equestrian area. Continue past the first stop (where you'll see a toilet and a handicapped mounting platform) to the end of the road where there is another toilet and parking area. Coming from the south on 195: Just before you come to I-90 you turn left onto Lindeke St. Follow Lindeke as it curves right (toward the north). You'll come to a 4 way stop. Go straight through. Now you're on Government way. If you get lost you can call Andrea Adler on her cell 509-432-9021 and she'll try to be of some help.



REMOUNT STATION RIDE – May 1st & 2nd

The remount station ride will be held May 1st & 2nd. This ride is in Montana on the Salish & Kootenai tribal lands in mostly open grass/sage brush country. In the past the weather has been warm, the grass green and the spring flowers in bloom. We have seen deer, elk, a bear with cubs and cattle.

This is cross country riding for the most part: options include a ride to the nearby Flathead river, a long ride to a fire lookout overlooking the Bison Range, the river valley and the Mission mountains, a shorter ride to an old cabin, and more.

The trail bosses will supply and prepare the breakfast on Saturday and Sunday. The cost of the food for breakfast will be divided among the folks who eat. (Last year that amounted to less than \$10 each). The kitchen will be set up Friday night and we will potluck it Friday and Saturday night. You are on your own for lunch.

Bring horse feed. There is some grass but you should not depend on it. Stock water is available but you should bring your own potable water for personal consumption. There are some pens suitable for horses as well as places to highline or put up electric fences.

Horse friendly dogs are welcome. Dogs must be kept inside your rig, crated or tied up at meals and at night.

DIRECTIONS: From St. Regis head north on hwy 135 to its junction with hwy 200. (about 23 miles) Turn right (east) on hwy 200 and go about 10 miles to Perma. There you will see a bridge on your left (north) crossing the Flathead River. (State road 382) Immediately after crossing the bridge turn right on the gravel road and go approximately 3 miles-and you are there.

A conservation permit is required for each person. You can buy the permit in Plains at the store/service station. (Plains is on hwy 200 a few miles west of the junctions of highways 135 and 200) Or you can buy the permits on line by going to <https://app.mt.gov/Als/Index>. Click one of the 3 choices you will find there and you will be taken to a page asking for your ALS #. If you have one but don't remember it click the search function and proceed. The lookup is quick. If you don't have an ALS# simply fill out the rest of the information and click submit. you will quickly be given a # and then proceed. This will take you to a page of choices. Scroll down to a section titled CSKT Tribal Licenses and choose either the annual permit (\$16.66) or the 3 day permit (\$9.48). You cannot buy a group permit nor can you buy more than one permit at a time. Thus each person must go through this process. I have found the online process to be more simple than this sounds and certainly more simple than going to Plains.

Please RSVP no later than April 26 with number of people and horses and whether you are bringing a dog. To RSVP or if you have questions email jerryshriner@gmail.com or call Jerry & Diane @ 208 667 2949

EDITOR'S NOTE: Montana is a Brand ID state. You will need both a Brand ID and Health Certificate to take your horse(s) into Montana, and according to the Brand Inspector out of St. Maries, you also need ID and Health Certificates for your dogs too!



2009
Photos



May 7 & 8, 2010 – Colville, WA

775 Old Arden Hwy • Colville, Washington 99114 • (509) 685-1977

10 head mixed ages and demonstrations by trainer and facility owner Gerry Cox

Friday (5/7)

Saturday (5/8)

12:00 P.M. – 6:00 P.M.

8:00 A.M. – 5:00 P.M.

Wild Horse Gentling Demo – Midday

Preview & Registration 8:00 A.M. – 12:00 P.M.

4:00 P.M. – 6:00 P.M. Preview & Registration

12:00 P.M. – 12:30 P.M. Silent Bid Adoptions Begins

Loading to follow

Possible Demo – Midday

DIRECTIONS: From I-90 go North at Exit 281 - US-395/Newport/Colville/US-2 N. Continue North on US-395 for approximately 66.5 miles. Turn right at Old Hwy NW/Old Arden Hwy. Go 0.2 mile, destination will be on the right.



2010 CALENDARS

We still have about 30 calendars left. Instead of trying to sell them as calendars, promote them as **RAFFLE** tickets with a **FREE** calendar.

2010 Winners

January –Dannale Anderson, Cataldo, ID February–D.M. Wiggins, Eagle ID

CALL FOR PHOTOS FOR BCHI CALENDAR 2011

Submit photos on a CD/Flash Drive(stick) in a JPEG or Raw Format, 300dpi – such that images will be in focus at a size of 12" x 12". Print all information legible. Give your photos to Debbie Samovar at the April 17th meeting or

Mail to be RECEIVED by May 1st, 2010 to: Debbie Samovar, 9176 E Soaring Hawk Lane, Saint Maries, ID 83861, 208-245-3045, dsamovar@hughes.net

[illegible]

MAP, COMPASS, & GPS TRAININGS

The first workshop was great, 50 people. Almost overwhelming! Our advertising helped. We had several new people, picking up 6 new family memberships, and many old members we hadn't seen for awhile. Jim Kimball, Al Linscott and Bob Williams covered the types of compasses and maps that are out there, how to read them and how to use the two together.

The second workshop wasn't as many people, the weather was too nice. The session started inside with a little follow up on using the compass. Then we went outside to go through a course in the park that Al Linscott and Gene Bruce set up. It was a good hands on training and everyone got to use their compasses on certain points.

The third workshop was on GPS systems and started in the classroom on how to read map coordinates with some discussion on software that you can upload area maps to your units. Then the class moved outdoors to practice how to locate where you are.

All in all, I think everyone learned something from the trainings, even if it was only the direction of North.

~Karen Kimball



Chain Saw Certification

Well, I think things went very well with the Chain Saw Certification. We had 14 people in attendance, with Dee and I making 16. We gathered at our shop at 10:00 AM for coffee and a crumpet. Then loaded into pickups and on to horses and mules and trekked off to a location above the house. George Miller gave an introductory lecture on chainsaw safety and procedures.

We then created several situations with actual trees by towing them into places of stress such as side blinds, Hang ups, across ridge tops and limbing. Every one had a chance for saw time, and a chance to see what happens when wrong cuts are made. The training event took a little over 2 1/2 hours.

We then returned to the shop area for a chili feed and filling out certification cards. Had a good time and the job got done.

Terry Sverdsten, Trail Boss

TRAIL SENSE for a NEW GENERATION

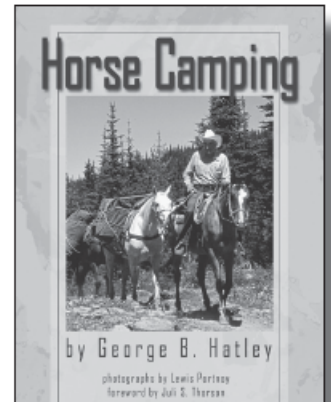
Horse Camping [Revised Edition]

George B. Hatley

Photographs by Lewis Portnoy

Foreword by Juli S. Thorson

Idaho's consummate cattle rancher, trail guide, and Appaloosa Horse Club founder advises pack trip enthusiasts from his practical and uniquely sage perspective.



Paperback • ISBN 978-0-87422-303-3 • \$24.95

Washington State University Press titles are available
at bookstores, online at wsupress.wsu.edu,
or by phone at 800-354-7360

WSU PRESS

Fine Quality Books from the Pacific Northwest

In Memoriam

Keith Baese
passed away on March 10th
in Arizona. Memorial service were
held at Farragut on March 20th.
He and his wife Heather were
past members of our club.



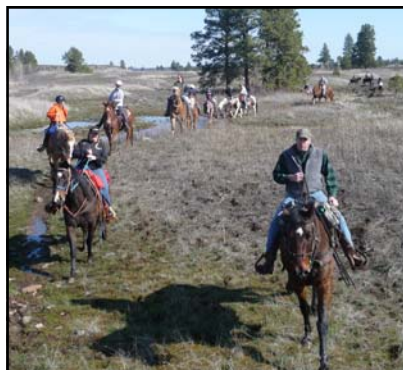
FISH TRAP RIDE

We had a great ride; the weather couldn't have been any better for the first part of March. I don't thin the club has ever had a ride this early before, but we didn't have any winter.

30 people turned out to ride. David Rousher did a little fishing close to the trail head and had coffee and hot water for us when the ride was over. Everyone enjoyed about a 4½ hour ride and we stopped for lunch by an old barn.

Lea Williams, not by her choice, demonstrated how fast hypothermia can happen. Marilyn Rousher can tell us it always pays to wear long underwear and not the silk.

Hope the Farragut Ride turned out as nice. ~Karen Kimball, Trail Boss



HYPOTHERMIA—IT ANI'T NO FUN!

In February Bob taught about hypothermia. I heard everything he said, BUT, it was a day ride with a group of people and what could go wrong on a sunny bright day? I always ride in Jeans and I had on a cotton T-shirt and a cotton sweatshirt. My socks were cotton too. We were riding along having a good time. My lunch was in the horn bag, my phone in the pocket of the vest I had on over the sweatshirt and my little camera was on my wrist.



There was a deep pond we had to cross. "No Problem" I thought, Pepper goes through water just fine. WELL.... not this time. He got to the middle, dropped his head and laid down. I got him pulled up and he flopped down on the other side and tossed me face first into several inches of water and mud. I was soaked to the skin.

I still had one of the reins in my hand but Pepper was not attached. A nice man helped me to my feet and Bob took the rein from my hand.

In less than two minutes I was shivering until I could hardly stand. Marilyn Rousher and Bob began stripping my clothes off me. I remember thinking I can't get out of my clothes, I have none to put on. Marilyn had an extra layer on and she shed them and I put them on. She also had an extra pair of wool socks, I borrowed them. I do not know what I would have done otherwise.

It was a lesson well learned. I will take extra clothes and socks. If I don't need them maybe someone else will. Hypothermia starts very quickly. It was a little scary for a while, but I finished the ride.

Vicki Gish had clam chowder in their trailer and that really warmed my innards up when we got back.

Thank you for all your concern and help. My lunch was fine and my phone was fine, my camera drowned.

~Lea Williams

HYPOTHERMIA FIRST AID

ALL CASES

- Move victim to dry shelter and warmth
- Handle gently
- Remove wet clothes — cut off if necessary
- Apply mild heat (comfortable to your skin) to head, neck, chest and groin — use hot water bottles, warm moist towels
- Cover with blankets or sleeping bag; insulate from cold — including head and neck

MILD CASES

- Primary task is to prevent further heat loss and allow body to rewarm itself
- Give warm, sweet drinks — *no alcohol*
- Apply mild heat source to stabilize temperature and/or
- Exercise to generate heat
- Hot shower to point of perspiring
- Keep victim warm for several hours

MODERATE CASES

- Same as above
- Offer sips of warm liquids only if victim is *fully* conscious and able to swallow without difficulty — *no alcohol*
- Have victim checked by doctor

SEVERE CASES

- Obtain medical advice as soon as possible using your radio
- Assist victim, but avoid jarring him — rough handling may cause cardiac arrest or ventricular fibrillation of heart
- No food or drink
- Observe for vomiting and be prepared to clear airway
- Ignore pleas of "Leave me alone, I'm O.K." Victim is in serious trouble — keep continuous watch over victim
- Lay victim down in bunk, wedge in place, elevate feet, keep immobile; no exercise
- Apply external mild heat to head, neck, chest and groin — keep temperature from dropping, but avoid too rapid a temperature rise.
- Transport soon, gently, to hospital

CRITICAL CASES

- *Always assume patient is revivable* — don't give up — pulse very difficult to feel
- Handle with *extreme* care
- Tilt the head back to open the airway — look, listen and feel for breathing and pulse for *one to two full minutes*
- If there is any breathing or pulse, no matter how faint or slow, do not give CPR, but keep a close watch on vital sign changes
- Stabilize temperature with available heat sources, such as naked chest-to-back warming by other crew member (leave legs alone)
- If no breathing or no pulse for one to two full minutes, *begin CPR immediately*
- *Medical help imperative — hospitalization needed*

WARNING

- First aid for severe and critical hypothermia is to add heat to stabilize temperature only. Rapid rewarming, such as a hot shower or bath, may be fatal; it will, at least, cause complications. Allow body to rewarm itself slowly.
- Body core temperature lags behind skin temperature during rewarming. Keep victim protected for extended period after apparent full recovery or medical help arrives. Many hours are required for return to normal temperature.
- Always assume hypothermia is present in *all* man-overboard situations in which the victim has been exposed for more than 10-15 minutes.
- Victims may also be suffering from near drowning, thus needing oxygen. Observe for vomiting.
- In a helicopter rescue, protect victim — including the head — from rotor blast wind chill.

F° 99.6°
C° 37.6°
NORMAL



97° 36°
**MILD
CONDITION**



93° 34°
**MODERATE
CONDITION**



90° 32°
**SEVERE
CONDITION**



82° 28°
**CRITICAL
CONDITION**



Body temperature
(taken rectally)

CLASSIFIED ADS

FOR SALE

2005 Aluminum Classic Westerner
Bunkhouse I Goose Neck
3/Place Living Quarters

Interior:

Propane Furnace/Thermostat, Hot Water Tank,
Microwave, Refrigerator, Shower, Toilet, CD/Radio,
Satellite Ready, Air Conditioner, Generous sleeping
area and a Take Down couch for a bed.

Exterior:

19ft. Awning, 35 gallon water tank, 8 ft. hay rack,
Rumber Floors, Mid/Rear Tack Area, Slider/Take
Windows on head side. Spare Tire/Jiffy Jack.
Ready for the Season.

Price: \$17,500.00

A Must See!!!!!!

vanessa@longearoutfitter.com
208-582-0105



Upper Cupboard or Bunk Bed



Rear Tack Area



35 gallon water tank



Hay Rack



Sleeping Area



Interior Area for Stock

Dear PBCH Friends, Please search your hearts and your address book to see if we can help this woman re-home her dogs. I would not ask if this were not a genuine hardship situation. Please read the letter below. If you cannot help her, please forward this to anyone who might. Thank you so much for your help. Diane Shriner (208) 667-2949

Dear Friends, In February of 2009 I was diagnosed with a very rare cancer, Synovial Sarcoma of the head and neck. I lost my job and am on the brink of losing my home. It is time for me to accept the fact that my dogs need a stable home where they will be loved and taken care of for the rest of their lives. My precarious health issues and the fact that I am going to have to move back to L.A to be with family but without a permanent home, this forces me to make this decision.

Scout is about 5 years old. Raven is about 8 years old. They are both black female mixed Labs and in excellent health. I rescued them at the same time. Scout was just a baby so Raven pretty much became her mom.

Raven is the best dog I have ever had. She is loving but not pushy. She is completely house broken and doggie door trained. If you don't have a doggie door, she'll tell you she needs to go out. You never ever have to yell at her. She loves all people and all other dogs. She has never shown aggression to any dog or person. When she's outside, if someone walks by that she doesn't know yet, she'll bark at them but then stop very shortly after. She's awesome.

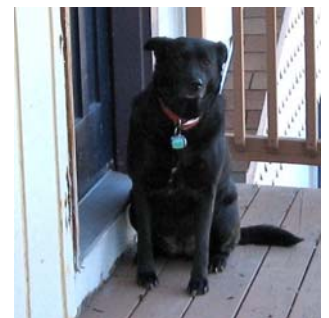
Scout: When you first meet her she is a little shy but when she sees you petting Raven she will push her way in and rub against your leg for a little pet. She's very low maintenance though. She loves people and all other dogs. She has never shown aggression to any dog or person. I think she's the smarter of the two. She learns anything you want to teach her very fast. She is completely house broken and doggie door trained. If you don't have a doggie door, she'll tell you if she needs to go out. They both have all their updated shots and are licensed.

Of course I don't want to separate them but realize I may have to. Each would do best with another dog for companionship. They love being outside but live in the house and would not be happy being outside all the time.

Thank you with all my heart,
Kathy Tushinsky
208-209-3545



Raven



Scout



**Mountain
West Bank**
Member FDIC

ELA CONNER

Residential Loan Specialist

econner@mtnwb.com

101 Ironwood Drive, Suite 250

Coeur d'Alene, Idaho 83814

Direct (208) 415-5343 • Cell (208) 929-0175

Fax (208) 415-5386 • Toll Free (800) 641-5401

www.mtnwb.com



Class 8 Trucks

6221 Valleyway Ave.

Spokane, Washington 99212

(509) 534-9088 Fax 534-7701

Class8Trucks@aol.com

www.class8trucksales.com



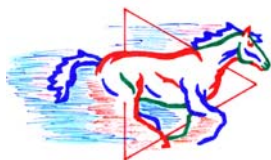
Butch Johnson

Res. (509) 926-3576

Hoofbeats

Foundation Training with Ginger

(208) 691-5402 or (208) 623-5908



Creating a Respectful
Relationship Between
Horse & Owner

Confidence Building/Starting/Ground Work/Saddle Breaking/Obstacles

The Northwest's Largest Independent Tire Dealer
OREGON-WASHINGTON-IDAHO-MONTANA-CALIFORNIA-NEVADA



TOM SCOTT

Les Schwab Tire Center

**Alignment
Shocks
Brakes**

(208) 773-1566

302 Seltice Way

P.O. Box 939

Post Falls, ID 83854

Carlson Insurance Agency, Inc.

Jerry S Carlson, CPCU, CLU, ChFC

7736 N Government Way, # 7

Dalton Gardens, ID 83815

Bus: 208-772-8531

Toll Free (877) 574-2672

Fax: 208-772-8532

jsfcig@cs.com



**CENTURY 21
Beutler & Associates**
1836 Northwest Blvd.
Coeur d'Alene, Idaho 83814
Cell (208) 661-6753
Toll Free (800) 786-4555
Fax (208) 415-0801

Katie Bane, GRI, ABR®
REALTOR®
realestate@icehouse.net



Each Office is Independently Owned And Operated

DAVE LOGUE
President

**Selkirk
Aviation Inc.**

FAA Repair Station #LOGR640X

Specializing In Fiberglass Aircraft Parts

email: selkirkav@selkirk-aviation.com

www.selkirk-aviation.com

(208) 664-9589

Voice Mail 1-800-891-7687

3805 Industrial Ave.

Coeur d'Alene, ID 83815

IONI LUECK
Vice-President

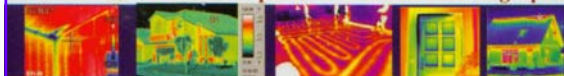


Griffinspect Home Inspections LLC

Full Service Home Inspections - Thermal Imaging

Teri Horton

Owner ~ Certified Inspector ~ Certified Thermographer



208-664-9775

212 Ironwood Dr. Suite D 245
Coeur d'Alene Idaho 83814

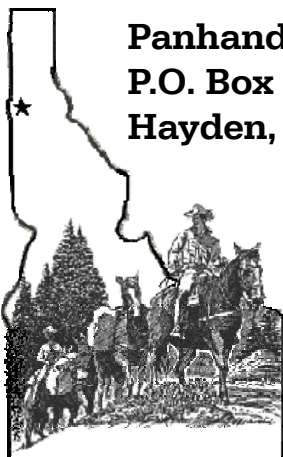
www.griffinspectllc.com
teri@griffinspectllc.com

THE RANCH AT MICA MEADOWS

A Full Service Horse Care Facility

Six Miles South of Coeur d'Alene on Hwy 95

Stall, Pasture and Paddock Board • Indoor and Outdoor Arenas
Riding Trails • Riding Lessons • Horse Training
Equine Event Center



Panhandle Back Country Horsemen
P.O. Box 1903
Hayden, ID 83835

Place
Stamp
Here

**Monthly meetings
are the 3rd**

SATURDAY

Held in the Dalton
Gardens
City Hall.

Ya can
hitch yer
hoss at
at 6360 North Fourth St



Place Label Here

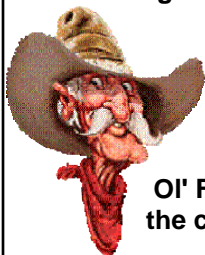
Next meetin'....

Saturday
APRIL
17th

Socializing - 7:00
Meeting - 7:30

Enjoy some friendly
conversation, hot coffee
and snacks.

Heck fire... you might even
win the Progressive Pot!



Sure
would
like to see
ya thar...

Ol' Festus &
the crew.

**Thanks to all of our
members for supporting
Panhandle Back
Country Horsemen.**
We couldn't do it without
YOU!

APRIL

10th – Saturday

Inland Empire Mustang Horse Club Ride
Bob Williams, Trail Boss, 509-280-7796 or leawilliams65@yahoo.com

11th – Sunday

Marie Creek Trail Fun Ride
Les Erickson, Trail Boss, 208-773-6482

17th – Saturday • Regular Meeting – Open to Public

24th – Saturday

Tune-Up Clinic
at Mica Meadows Ranch, S. Hwy 95
Perry Saathoff, Trail Boss
Please **RSVP** to 208-667-7452 or saathoff50@yahoo.com

May 1st & 2nd – Saturday & Sunday
Remount Ride

Jerry & Diane Shriner
Please **RSVP** to 208-667-2949 or jerryshriner@gmail.com

PANHANDLE BACK COUNTRY HORSEMEN CONTACTS

President:	Bob Williams	509-280-7796
Vice-President:	Al Linscott	208-682-4918
Treasure:	David Rousher	208-667-7452
Secretary:	Debbie Samovar	208-245-3041
Newsletter:	Debbie Samovar	dsamovar@hughes.net
Web Wrangler:	High Desert Design	hdd430@gmail.com
Web Site:	www.pbch.org	