



# ~Tails & Trails~

NOVEMBER

2009



## Happy Thanksgiving



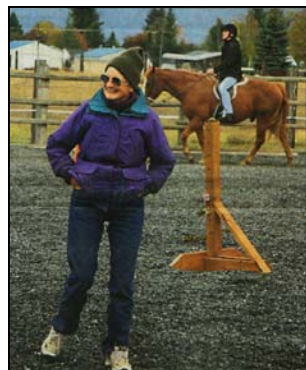
### From the President's Saddlebag

I hope this finds everyone doing well. Summer is over and another riding season has come to an end. We are gearing up for the State Convention in Twin Falls on November 13<sup>th</sup> – 14<sup>th</sup> and any club member is welcome to attend.

The Christmas party is December 5th, please take a look at the flyer for all the information. Angie Parsons and crew have done an excellent job in setting things up. It should be a lot of fun, so be sure to RSVP no later than November 27, 2009. We'll have TWO raffles that we are selling tickets for: an Elk painting by member Judy Linscott and a Bev Doolittle print. This is a fund raiser for the club and you can purchase tickets at the club meeting and the Christmas party. The drawings will be the night of the Christmas party.

We are looking for ideas for programs to have after the monthly meeting so if there is something out there that is of interest to you please contact me.

I want to personally thank all the people who were involved in the trial challenge this year, it came off with no problems and everyone seemed to have a great time. I hope to see you down the road. ~ Perry



Marian Crumb puts a group of NIC students through their paces during a physical education class at her horse ranch in Hayden.

## 4 the kids... and horses

### Crumb receives Idaho 4-H distinguished service award

By RICK THOMAS Staff writer, CDA Press

**HAYDEN** — For almost half a century Marian Crumb has worked with 4-H kids, and on Oct. 16 she was recognized for all the hours she put into the effort. Crumb was named by the State 4-H Leaders Association as the outstanding 4-H leader from throughout Idaho at their annual 4-H Leader Forum in Idaho Falls. She recently completed her 45th year serving as a volunteer 4-H leader, focusing primarily on the 4-H horse program. "She's been one of those outstanding 4-H leaders who is always engaged in promoting the program," said Jim Wilson, area 4-H youth extension educator.

Her work with 4-H kids taught them that competition is not only about winning but about grow-ing as a person, and she has worked hard with 4-H groups to develop public speaking skills, he said. "She is a rock and foundation for the program," Wilson said. In recognizing her accomplishments, beyond the years of dedicated service, Crumb's many contributions at the club, county, district, state and national level were highlighted. "I was surprised, shocked," Crumb said Thursday. "It was a very neat experience."

From her 9-acre horse ranch in Hayden, Crumb has provided leadership to the Diablos 4-H Club for 35 years, with an annual enrollment of 50-plus members. The club name was chosen by the founding members of the equestrian group, and stuck even when she asked later members if they wanted to change it. "I asked the kids what name to pick," she said. "The first year we had a couple of kids who fit that description." Now 76, she swears she feels like Jack Benny, the perennial 39-year-old, and still enjoys working with the kids and her 18 horses.

"I love the kids," she said. They're my family. The parents have been great since my husband (John) died six years ago." The most fun was the reward of seeing the members and their horses changing for the better, and enjoying the changes in each other. "It has been a pleasure and a joy working with 4-H," she said.

*continued on page 3*

### Panhandle Back Country Horsemen Contacts

Web Site: [www.pbch.org](http://www.pbch.org)

President: Perry Saathoff 208-691-6452  
Vice-President: Al Linscott 208-682-4918  
Secretary: Debbie Samovar 208-245-3041

Treasure: Sharon Bruce 208-660-5460  
Newsletter: Debbie Samovar [dsamovar@hughes.net](mailto:dsamovar@hughes.net)  
Web Wrangler: High Desert Design [hdd430@gmail.com](mailto:hdd430@gmail.com)

**PANHANDLE BACK COUNTRY HORSEMEN GENERAL MEETING – OCTOBER 17, 2009 MINUTES**

Acting President Gene Bruce called the meeting to order at 7:36.

Debbie read September minutes. Karen made a correction - Jim wasn't at the Marie Creek cleaned up. Corrected minutes approved.

Sharon Bruce gave the Treasurer's report. Bills to be paid were - \$293.25 to Karen Kimball for the Trail Challenge, \$65 to?? for the Trail Challenge, \$4.54 to Debbie Samovar for refreshments and \$42.81 to Joni Lueck for Trail Challenge ad in Nickelsworth. Bob Williams made a motion to pay, seconded by Joyce Bissell, motion passed.

New member present, Judy Hostetler.

**NOMINATING COMMITTEE** – Bob Williams reported they've talked and they'll get together when Marilyn is back in town.

**CALENDARS** – Sharon Bruce reported that we've to 200 sell and that we'll we get 10% of what we sell.

**LIFE FLIGHT** - Debbie Samovar reported that she received 22 requests for memberships and suggested that we look at last year's enrollment to get a better idea of how many memberships to buy this year.

**ESQUIRE RANCH WORK PROJECT** – Bob Williams reported that we had a turn out of 8 members and got a lot of work done. They put in new bathroom and bull throughs. He said he asked about the BLM charges. Permits are needed for overnight camping for groups of over 10 and that you need to give a 3 month notice. Basically they don't want overnights. Steve Smith is going to talk to the BLM about the impracticality of this. Also for group ride, the BLM wants \$3/person. Bob is going to get the rules in writing and according to some, they can't put fees on camping areas. Robert Wuest reported that Ranger Rick, out of Troy, MT wanted \$300 for him to camp at the Cabnits in the Bitterroot, and that the fee was good for 10 people and 3 horses. Additionally, you'll need weed free hay in WA and MT. If you can't get weed free hay, take cubes.

**TRAIL CHALLENGE** - Karen Kimball reported that we made about \$650 and we're still waiting on some sponsors to pay. Karen asked that we send Thank You notes to the sponsors. Sharon Bruce said she'd do it as she has the list of who has paid. Karen Kimball has also invited the Riders to our Christmas Party on us.

**MARIE CREEK MEADOW FERTILIZATION** - Karen Kimball reported that her, Jim and the Bruce's took two pack animals and fertilized the meadow in just a few hours. The plan is to spray, overseed and fertilize again next year. Andy Boggs said that they do pay Pantra for mileage, so we should be able to get funds for projects. They want us to do specific trails, such as #20, Independence and Marie Creek, and will get a list to us. Also she got a call from Tracy Gravelle that the FS has a new billing system, so our money for Red Ives will be coming a little late and that we'll also be getting a little more.

**FUND RAISING** - Karen Kimball said that even with as much fun as our fund raising events are, they take too much time to coordinate and set up. We should be focusing our efforts in trail clearings and working with agencies for payment.

**CHRISTMAS PARTY** – Angela Parsons reported that things are going well and she still needs someone to put on the slide show.

Karen Kimball said that Jim could do that and members just need to put their photos on CD's and mail them to Jim. Sharon Bruce is working on the list of awards. Judy Linscott donated an Elk painting, so that will be raffled off too. It was asked if the club was going to subsidize the meal. As the price is reasonable, it was the general consensus not to.

**STATE CONVENTION** – the Kimballs are leaving Thursday morning, for those who would like a ride. She received some CD's about BCH from the MT state chapter. They'll review them at the BoD's meeting and maybe pass them onto BCHI. There are 2 proposals before the State, both put forth by the Squaw Butte chapter. 1) That the state set aside \$250/chapter for reimbursement for trail work activities. 2) That BCHI sponsor and hold a 5 day Wilderness Packing Clinic open to members of BCHA. Cost to attendees will be \$75. State to provide training materials, variety of loads to train with, community meals, limited number of training pack stock, special permits, certified weed free hay for training stock and for purchase, porta-potties, advertising and on site EMT.

We are allowed 8 delegates and it was proposed that we pay the \$45 registration fee for those who do not get per diem. Bob Williams moved to approve, Angela Parsons 2<sup>nd</sup>, motion passed. We also need to let the state know what 2 public events we will hold in 2010 for insurance. It was agreed that we hold a pack clinic in the spring and a steak ride in the fall. There will also be a photo contest. Any one who wants to enter a photo can get it to Karen Kimball and she'll take it down. Debbie will email info to everyone.

**WINTER PROGRAMS** – we need ideas and someone to line things up for presentations we can do at our meetings. Ideas put forth were map & compass reading, GPS reading, knot tying, and a line packer to speak. Contact Perry Saathoff to help or have any ideas.

**EVENTS COMMITTEE** – need a chair and ideas for rides, work projects and other events for 2010. Call Perry to help or have ideas.

The state got a custom metal wall art from Wicks Western Originals in St. Maries for the Lionbergers for their years of work.

Joyce Bissell read a letter that was post in the St Maries Gazette Record regarding a proposed Parks & Rec ruling that would prohibited use of saddle or other recreational packing livestock, such as llamas, goats, etc., is on trails, roadways, and other areas and was encouraging people to write in and protect our ability to ride in the parks. Debbie Samovar did some research and found there is already an exiting rule and the new rule was just adding the words llamas and goats. Karen Kimball said she would call the local Parks & Recs office to get further clarification.

Joyce also reported that you can't stay overnight with horses at MT trail heads unless it is designated. Also they saw some great signs on the trails stating they were maintained by the Bitterroot BCH.

Bob Williams made a motion to adjourn, seconded by Anglo Bissell, meeting adjourned at 9:05. There were 16 members present.

Respectfully Submitted, Deborah Samovar, Secretary

# 2009 EVENTS



► PBCH Events ► [Regular Meeting](#) ► [TRAIL BOSS NEEDED](#) ► [RSVP](#) ► Non-PBCH Events



## NOVEMBER

November 13th & 14th – Friday & Saturday  
BCHI 2009 STATE CONVENTION  
in Twin Falls

21st – Saturday  
[Regular Meeting](#)



## DECEMBER

5th – Saturday  
**Christmas Party**  
Avondale Country Club  
10745 Avondale Loop Rd, Hayden Lake, ID  
Angela Parson - 208-640-3105, Trail Boss



### 4 the kids....

She was a driving force behind the establishment of the Kootenai County 4-H Horse Camp in 1993. The event became so successful that for the past four years it has been expanded into two week-long events which can accom-modate up to 124 riding participants.

At the district level, Marian has coordinated several different district horse shows and Horse Bowl contests, developed numerous educational publications (including Back County Packing) and provided leadership in establishment of the Dressage program. She has also been active within the District 1 4-H Horse Leaders Council. Nationally, Crumb wrote the Pacific Northwest Hunter/Jumper Guide, which is currently being used by many 4-H programs throughout the western United States. In addition, Crumb has supported Idaho Special Olympics equine events in North Idaho, serves as an equine management instructor at North Idaho College, and has assisted local Girl Scout groups.

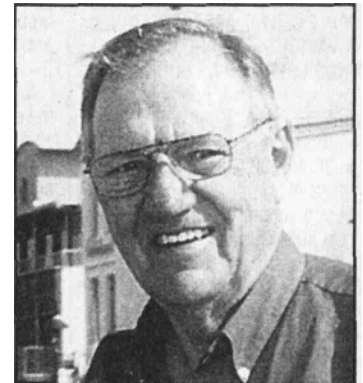
"Marian encourages youth to set challenging goals for themselves, and then provides the supportive, nurturing leadership that helps them to achieve their goals," Wilson said. She is also generous with her time, said Taylor Harper, 15, of Rathdrum, who has been in the program for six years. "I learned a lot about horses from her," Harper said. "She is an excellent role model for me. She loves helping everyone out."

Harper said Crumb teaches her students all sorts of riding, from western and English to dressage, jumping and trail riding. And she can still out ride many of the younger members, said Katie Breuchaud of Coeur d'Alene, who started 20 years ago at age 9 and is now a 4-H leader. After eight hours in the saddle on a pack trip, Breuchaud said she was too sore to ride any more, but Crumb was ready to ride another eight hours.

"She's great," Breuchaud said. "I think it was my eighth grade, my report was on her as the person I admire most." Crumb is the best in town at what she does, Breuchaud said. "I'm fortunate to have learned from her," she said. "She is patient. She devotes all her time to the kids."

## RIX, Daniel Alfred

January 1,1930  
to  
October 20,2009



Daniel passed away peacefully on October 20,2009. He is survived by his loving wife of 59 years, Virginia, his three children, Janet, Lori and Julie. Predeceased by son, Chris (1988), eight grandchildren and five great-grandchildren. Daniel met his wife while attending high school in Hayward, California. He worked for the California Corrections Facilities for 15 years. His sense of adventure led Daniel and his family to move to Fort St. James, British Columbia in 1969. Daniel and Virginia spent seven years enjoying the outdoors and the various challenges of B.C. then moved to Sandpoint, Idaho. Daniel then resided in Dalton Gardens for the past 16 years. During this time he was very active in the Calam Shriners Organization, Mason and Venerable Master, and a 33 Degree Mason of the CDA Scottish Rites Bodies, also a member of the CDA Elks Organization. He was also on the Dalton Gardens Library Board and the Bureau of Land Management Committee. Dan loved spending time in his workshop building projects for his children and grandchildren. He also spent many years on the trail with his horse and mule. Daniel enjoyed his large group of friends and loved sharing his views on Current Events. Daniel was well liked and will be missed by many. Daniel will be remembered for his sense of humor, generosity and his genuine love of life.

Contributions can be made to the Shriners Hospital.



# 2010 Calendar



**BCHI**  
**2010 Fund Raiser**  
**\$20 Donation**  
**Only 2,000 calendars**  
**to be sold**

**NOW AVAILABLE**

**WIN** one of **11** \$500.00 prizes and the **GRAND PRIZE** of your choice of a \$6000 Cabela's gift card or \$6,000 Lucky Acres Fencing products or half and half.

Monthly drawings conducted at the end of each month. Cash prizes awarded by check.

Name of monthly winner to be returned to prize pool for grand prize drawing on December 25, 2010.

The grand prize winner shall be responsible for paying sales tax, registration, all applicable fees and pickup or transport of the prize. Need not be present to win.

## 2010 NONMINESS

President  
 Vice President  
 Treasurer  
 Secretary

Board of Directors

State Board Directors

Executive Director  
 Public Lands  
 Education  
 BCHI Foundation Director  
 Newsletter

Bob Williams  
 Al Linscott  
 David Rousher  
 Debbie Samovar

Gene Bruce  
 Alan Harper (1 yr left)  
 Marilyn Rousher (replaced Jim Kimball)  
 Karen Kimball  
 Pres & Vice Pres (automatic)

Karen Kimball  
 Marilyn Rousher  
 Bob Williams (Alternate)

Perry Saathoff  
 Jerry Shriner  
 Terry Sverdsten  
 Joni Lueck  
 Debbie Samovar

If anyone wants a position they can call Bob Williams @ 509-244-9447



## Noxious Weeds Toxic to Horses



Leafy spurge



Toothed spurge



Tansy ragwort



Hoary alyssum



Viper's bugloss



Houndstongue



Yellow starthistle, causes chewing disease in horses

## For more information, contact:

Idaho State Department of Agriculture Noxious  
Weed Free Forage Program: 208.332.8592

P.O. Box 790

Boise, ID 83701

Fax: 208.334.2840

E-mail: [dan.safford@agri.idaho.gov](mailto:dan.safford@agri.idaho.gov)

or visit our website at: [www.agri.idaho.gov](http://www.agri.idaho.gov) or

Google: "ISDA Weed Free Hay"

Idaho Weed Awareness Campaign: 866.439.3337

Your County Weed Superintendent

Your local Forest Service office

Health Certificates and Coggins, please contact the  
Idaho State Department of Agriculture Animal  
Program at: 208.332.8540

Brand Inspections: 208.884.7070

## Additional ways to prevent spreading Noxious Weeds

- Learn to identify noxious weeds by obtaining a free copy of "Idaho's 57 Noxious Weeds" from the Idaho Weed Awareness Campaign, 866.439.3337
- Wash mud or dirt off your vehicle before going to public lands
- Drive on established roads and stay on designated trails
- Do not camp in infested areas
- Make sure that seeds are not stuck to your clothes or gear

## Noxious Weeds, Everybody's Concern

6-4-09

## IDAHO STATE DEPARTMENT OF AGRICULTURE

## Noxious Weed Free Forage and Straw Certification Program



## Noxious Weeds, Everybody's Concern

**CERTIFIED WEED-FREE  
STRAW & HAY REQUIRED  
ON NATIONAL  
FOREST LANDS**





# Idaho Noxious Weed Free Forage and Straw Certification Program

**What is the purpose of this program?** To limit the spread of noxious weeds through forage, straw, or mulch onto United States Forest Service (USFS) and other Idaho lands. Non-certified forage, straw, or mulch may contain noxious weed seeds.



**Why should I be concerned about the spread of noxious weed seeds through non-certified forage, straw, or mulch?** Noxious weeds displace native plant species which can decrease grazing capacities for wildlife and livestock by 65% to 90%. Most noxious weeds are non-edible to wildlife and livestock.

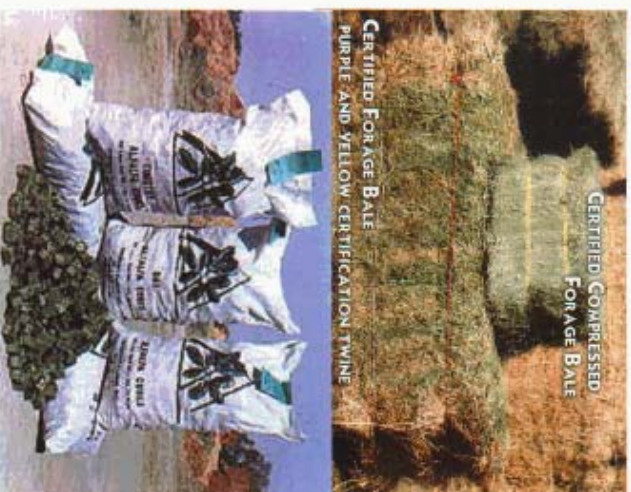


**How does the program benefit me?** It prevents the introduction and spread of noxious weeds in your favorite hunting, fishing, riding, and camping areas. It protects natural resources and wildlife habitat.



**What do I need to do to be in compliance?** Once you enter Idaho USFS land, if you possess any forage, straw, or mulch, it must be Certified Noxious Weed Free. Possessing non-certified forage, straw or mulch on Idaho USFS lands is subject to penalty.

**What is considered a forage?** Any type of hay, forage cubes, or compressed forage bales.



Certified Forage Cubes

**How will I know if I am purchasing Certified Noxious Weed Free Forage and Straw?** You will know you are buying Certified Noxious Weed-Free hay or straw bales by the ISDA certification bale tag (made of vinyl) attached to the bale twine.

ISDA  
(208) 332-8592

Certified to the Idaho State  
Noxious Weed Free Standards

IDAHO STATE NOXIOUS  
WEED FREE FORAGE

County Designation(s)  
1A

Bale Tag No. 9658

Or it will have at least one strand of purple and yellow (intertwined) certification twine encircling the bale.



Certified Compressed Forage Bales (twice compressed) can be identified by the yellow binding material with the statement "ISDA NWFFS" and the manufacturer's name printed in purple. In addition, two consecutive vertical purple lines are placed before and after the above statement.



Certified forage cube bags or feed tags will be printed with the ISDA logo and the following required information:



Certified to the North American Standards  
ISDA, 208-332-8592 ISDA Forage Mfg. #  
North American Weed Free Forage Certification Program

**Where can I buy Certified Noxious Weed Free Forage and straw?** A list of growers (baled hay and straw) can be found at the Idaho Weed Awareness Campaign webpage. In addition, baled hay and straw, forage cubes, and compressed forage bales can be found at most retail feed stores.

**What other good stewardship practices can I do to prevent the spread of noxious weeds onto USFS lands?** ISDA recommends pre-feeding (this purges the animal's digestive tract) your animals Certified Noxious Weed Free Forage 48 hours prior to entering USFS lands. It is also suggested to thoroughly brush and clean hooves to remove potential seeds from your animals before leaving home.



**Whom should I contact if I see a noxious or unknown weed?** Contact your County Weed Control Superintendent or the Public Land Manager where you are recreating.

## Panhandle Back Country Horsemen Membership Application

Back Country Horsemen of America... is a nonprofit organization working towards the preservation of the back country. Our primary purpose is to maintain trails, trailheads and opportunities to use stock in the backcountry. We work with Federal and State agencies, other groups and individuals to support proper use and protection of our backcountry. We support education of all backcountry users to reduce impacts on meadows, trails and all resources so that our right to use horses is maintained.

If you believe in our cause, we welcome your membership. We have monthly meetings, with an education session and our members receive a monthly newsletter.

Dues paid after November 1st apply to the coming calendar year. Please complete the following and mail with your dues to:

**Panhandle BCH, P.O. Box 1903, Hayden, ID 83835**

Name: \_\_\_\_\_ Spouse's First Name: \_\_\_\_\_

Mailing Address: \_\_\_\_\_ City: \_\_\_\_\_ State: \_\_\_\_\_ Zip: \_\_\_\_\_

Phone Number: \_\_\_\_\_ E-mail: \_\_\_\_\_

☐ \$35 Family Membership

☐ \$25 Individual Member

☐ \$30 Associate/Supportive Member

**LIFE FLIGHT MEMBERSHIPS** – \$35.00 per Individual or Family \$ \_\_\_\_\_

**CHECK TOTAL \$** \_\_\_\_\_

Memberships run from February to February, with **payment due by January 15th.**

Name: \_\_\_\_\_ Name: \_\_\_\_\_

Name: \_\_\_\_\_ Name: \_\_\_\_\_

Name: \_\_\_\_\_ Name: \_\_\_\_\_

We would like to know if you are willing to participate on PBCH projects or if you are becoming a member mainly to support the philosophy of PBCH. Please check the areas that you are interested in:

1. \_\_\_\_ To support the philosophy of PBCH.

7. \_\_\_\_ Camp tending.

2. \_\_\_\_ Attend monthly meetings.

8. \_\_\_\_ Help put on programs at meetings.

3. \_\_\_\_ Receive monthly newsletter.

9. \_\_\_\_ Newsletter or Web Editor.

4. \_\_\_\_ Work on club fund raising events.

10. \_\_\_\_ Work to organize pleasure rides.

5. \_\_\_\_ Pleasure rides.

11. \_\_\_\_ Work on trailheads.

6. \_\_\_\_ Work on trail maintenance.

12. \_\_\_\_ Help on club cook outings.

### **RELEASE OF ALL CLAIMS:**

In consideration of my membership in, and participation in the activities of Panhandle Back Country Horsemen, Inc., I do hereby waive, release and discharge Panhandle Back Country Horsemen, Inc., its agents, employees, and officers, from all claims, demands, actions, and causes, and it's successors or assigns, for all personal injuries, known and unknown, and injuries to property, real or personal, caused by, or arising out of the activities and my participation with Panhandle Back Country Horsemen, Inc., and the purpose from which such organization exists.

I do further acknowledge that the activities in which I participate are or may be hazardous, and I am fully aware of prospective injuries, and have read this release, and understand all of its terms, and voluntarily sign the same with full knowledge of its significance.

Dated this \_\_\_\_\_ day of \_\_\_\_\_, 20\_\_\_\_\_.

Member:

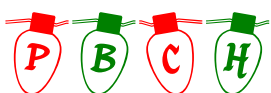
Spouse:

Witness:

**Thank you for joining Panhandle Back Country Horsemen**

**LIFEFLIGHT INFORMATION:** Here is how it works. You must be a BCH member. If you have a family membership, each person cost \$5.50. This extends only to immediate family. If you have grandkids, and you are not their guardian, then their parents must buy a family membership. Coverage is all of Idaho, Wyoming, Washington, Oregon and parts of California, Nevada, Utah, Colorado and a small bit in Montana. It covers you for ANY accident, not just PBCH events.





**WHEN:** Saturday, December 5th, 2009

**WHERE:** Avondale Golf Club  
10745 Avondale Loop Rd, Hayden Lake, ID  
(North on Hwy 95, Government or Maple St– turn right on Miles Avenue.  
Go East on Miles Ave, past Strahorn Rd, turn left on Avondale Loop Rd. You are there!)

**COST:** \$18.00 Per Person

**MENU:** Dinner will be Baked Salmon w/ lemon butter sauce or Chicken Cordon Blue w/ creamy white sauce baked potato, chef choice vegetable, fresh salad bar, baked rolls & butter, chef's choice dessert. Drinks, other than coffee, are extra.

<b>ITINERARY:</b>	5:30 – 6:00	Social
	6:00 – 7:00	Dinner & Entertainment
	7:00 – 7:15	Short Meeting
	7:15 – 8:00	Awards
	8:00 – 8:30	Slide Show by Jim Kimball
	8:30 - ??	Gift Exchange. If you wish to partake in the gift exchange, bring a nice item (worth stealing) and costs no more than \$15.00.

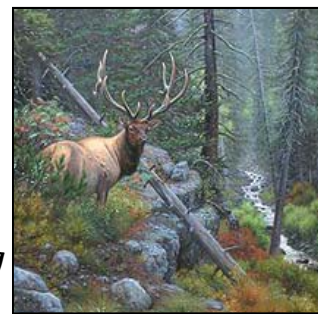
**RAFFELS:**



*Eagle Heart  
by Bev Doolittle*

**Tickets are selling for  
\$1.00 each or 6 for \$5.00**

*Elk painting  
By member Judy Linscott*



**AND.....** Entertainment by the Lake City Harmonizers

**RSUP:** **No later than November 27th**  
Contact Angela Parson @ 208-640-3105 or angeleyes005@verizon.net

-----CUT HERE-----

Make check payable to PBCH. Mail to: c/o Sharon Bruce, 5755 W Hayden Ave, Rathdrum, ID 83858

NAME(S) \_\_\_\_\_

HOW MANY \_\_\_\_\_ X \$18.00 PER PERSON = \_\_\_\_\_

AMOUNT ENCLOSED



**BCHI 2009 STATE CONVENTION – November 13th & 14th, in Twin Falls**

The High Desert BCH is gearing up for this years convention. The Board meeting will be 7:30 am – 4:30 pm on the 13th at the Idaho Fish and Game Office on Hwy 93, at 324S 417E Hwy 93. Friday lunches will be \$7/person.

The convention will be on the 14th at the Red Lion Canyon Springs Hotel at 1357 Blue Lakes N. There will be a photo contest, the Heroes Memoriam, a silent auction and raffle. Convention & Banquet is \$45/person, Banquet only \$20. If any or all chapters would like to bring an item for the silent auction it would be great. The proceeds will go to HDBCH.

Accommodations are available at the Red Lion Canyon Springs Hotel 83301, where we have a \$75/night rate or the KOA campground on the other side of Hwy 93 to the south. The KOA is normally closed that time of the year but if we have 2 or more wishing to stay, they would open and you'd need to reserve by November 31, 2009. Call 800-562-4169 or visit [www.koa.com](http://www.koa.com).

**REGISTRATION FORM**

Name \_\_\_\_\_ Spouse or other \_\_\_\_\_

Address \_\_\_\_\_

City \_\_\_\_\_ Zip \_\_\_\_\_ Phone \_\_\_\_\_

E-mail \_\_\_\_\_ Chapter \_\_\_\_\_

I or we will attend:

Friday State Board Meeting: Self \_\_\_\_ Other \_\_\_\_ \$7 each for lunch on site, pay on site

Friday Foundation Meeting: Self \_\_\_\_ Other \_\_\_\_ \$7 each for lunch on site/ pay on site

Sat. Convention & Banquet: Self \_\_\_\_ Other \_\_\_\_ \$45 per person

Sat. Banquet Only: Self \_\_\_\_ Other \_\_\_\_ \$20 per person

**REGISTRATION IS \$45 PER PERSON BEFORE Nov 1st; \$50 AT THE DOOR**

Registration includes information packet, continental breakfast at Saturday convention and Saturday night banquet.

Register by 11-1-09!!! Send to Kathy Kerley, HDBCH, 547 Golf Course Rd, Jerome, Idaho 83338

Phone: 208-324-4754 or e-mail: [kathy\\_kerley@bridgemail.com](mailto:kathy_kerley@bridgemail.com)

Raffle tickets are 6/\$5 or \$1/ea, with the drawing at the banquet Saturday night.

1st Place  
Traeger Grill,  
Lil' Tex  
BBQ070



2nd Place  
8x12 Wall Tent



3rd Place  
pair of Chinks built  
by HDBCH member  
Vivian La Rue



**2009 BACK COUNTRY HORSEMEN OF IDAHO STATE CONVENTION**

November 13, 14, 2009

**CALL FOR ENTRIES & PHOTO CONTEST RULES**

1. No professional photos.
2. Entries to be digital or film images.
3. Photos may be by 4" X 6" to 11" X 14".
4. Photos may be mounted as you choose.
5. Nothing should be added to the image or taken away.
6. Please do not enter photos that have already been in a BCH photo contest.

**CATEGORIES**

"Working the Trails", " On the trail and camp", "Wintertime with Horses and Mules", "Nature" (scenery, etc.)

**AWARDS**

"People's Choice" ...\$30.00; "Best Overall" ....\$30.00; ribbons to 3 places in each category.

For questions call Jessica Klingener 208-490-0626.

Entries must be received no later than 9:00 a.m. on Saturday morning November 14<sup>th</sup> at the convention registration desk.  
Please fill out the entry form below and attach it to the back of each photo entered.

**ENTRY FORM**

NAME \_\_\_\_\_

ADDRESS \_\_\_\_\_

CITY, ST AND ZIP \_\_\_\_\_

PHONE \_\_\_\_\_

E-MAIL \_\_\_\_\_

LOCATION OF PHOTO \_\_\_\_\_

NAMES OF PEOPLE IN PHOTO \_\_\_\_\_

**PLEASE DELIVER YOUR ENTRIES WITH THE ABOVE INFORMATION  
BY WEDNESDAY, NOVEMBER 11TH TO:**

**KAREN KIMBALL  
6975 N 16TH ST  
DALTON GARDENS, ID 83815  
208-772-2434**



## Christmas Party Slide Show

Jim Kimball has volunteered to put on our slide show this year.

So send your 2009 PBCH related photos, with descriptions,  
on a CD to ARRIVE no later than Friday, November 27th to  
Jim at the above address.



(208) 457-8813 (509) 238-4959

**McKINLAY & PETERS**  
**EQUINE**  
 VETERINARY SERVICES

KRISTA PORTER, DVM [WWW.VETERINARIAN.COM](http://WWW.VETERINARIAN.COM)

**Mountain West Bank**  
 Member FDIC

**ELA CONNER**  
 Residential Loan Specialist  
[econner@mtwbank.com](mailto:econner@mtwbank.com)

101 Ironwood Drive, Suite 250  
 Coeur d'Alene, Idaho 83814  
 Direct (208) 415-5343 • Cell (208) 929-0175  
 Fax (208) 415-5386 • Toll Free (800) 641-5401  
[www.mtnwb.com](http://www.mtnwb.com)

**Class 8 Trucks**  
 6221 Valleyway Ave.  
 Spokane, Washington 99212  
 (509) 534-9088 Fax 534-7701  
[Class8Trucks@aol.com](mailto:Class8Trucks@aol.com)  
[www.class8trucksales.com](http://www.class8trucksales.com)

Butch Johnson  
 Res. (509) 926-3576



The Northwest's Largest Independent Tire Dealer  
 OREGON-WASHINGTON-IDAHO-MONTANA-CALIFORNIA-NEVADA

**TOM SCOTT**

**Les Schwab Tire Center**

(208) 773-1566  
 302 Seltice Way  
 P.O. Box 939  
 Post Falls, ID 83854

**Alignment  
 Shocks  
 Brakes**



**THE RANCH AT MICA MEADOWS**

A Full Service Horse Care Facility  
 Six Miles South of Coeur d'Alene on Hwy 95

Stall, Pasture and Paddock Board • Indoor and Outdoor Arenas  
 Riding Trails • Riding Lessons • Horse Training  
 Equine Event Center

Manager: Darren Barfield  
 (208) 667-1311

9530 South Hwy 95  
 Coeur d'Alene, ID 83814

**Carlson Insurance Agency, Inc.**

**Jerry S Carlson, CPCU, CLU, ChFC**

7736 N Government Way, #7  
 Dalton Gardens, ID 83815

Bus: 208-772-8531 Toll Free (877) 574-2672  
 Fax: 208-772-8532 [jscfig@cs.com](mailto:jscfig@cs.com)

**Greene's Back Acres**  
 Standing GBA Idaho Timber  
 Homozygous Buckskin/Dun Tobiano

**Paint Horses**  
 Guaranteed Color "Dun" Right

Steve & Cindy Greene  
 Specializing in beginner & Therapeutic  
 Riding lessons, for all ages

208-245-5492 • St. Maries, Idaho

- Lessons
- Clinics
- Boarding
- Transporting
- Breeding
- Foaling

**CENTURY 21**  
**Beutler & Associates**  
 1836 Northwest Blvd.  
 Coeur d'Alene, Idaho 83814  
 Cell (208) 661-6753  
 Toll Free (800) 786-4555  
 Fax (208) 415-0801

**Katie Bane, GRI, ABR®**  
 REALTOR®  
[realestate@icehouse.net](mailto:realestate@icehouse.net)

Each Office is Independently Owned And Operated




**DAVE LOGUE**  
 President

**JONI LUECK**  
 Vice-President

**Selkirk Aviation Inc.**  
 FAA Repair Station #LOGR640X  
 Specializing In Fiberglass Aircraft Parts  
 email: [selkirkav@selkirk-aviation.com](mailto:selkirkav@selkirk-aviation.com)  
[www.selkirk-aviation.com](http://www.selkirk-aviation.com)


(208) 664-9589  
 Voice Mail 1-800-891-7687

3805 Industrial Ave.  
 Coeur d'Alene, ID 83815

**Hogbeats**

Foundation Training with Ginger  
 (208) 691-5402 or (208) 623-5908

Creating a Respectful  
 Relationship Between  
 Horse & Owner



Confidence Building/Starting/Ground Work/Saddle Breaking/Obstacles

**Griffinspect Home Inspections LLC**  
 Full Service Home Inspections - Thermal Imaging

**Teri Horton**  
 Owner - Certified Inspector - Certified Thermographer

208-664-9775  
[www.griffinspectllc.com](http://www.griffinspectllc.com)  
[teri@griffinspectllc.com](mailto:teri@griffinspectllc.com)

212 Ironwood Dr, Suite D 245  
 Coeur d'Alene Idaho 83814




**WE ARE PARTICIPATING IN THE COUNTRY CARE PROGRAM**

Shop at the Country Supply website:  
[www.countrysupply.com](http://www.countrysupply.com)  
 and they will donate a percentage of your purchases!  
 Simply enter our Care Code when you complete your order.

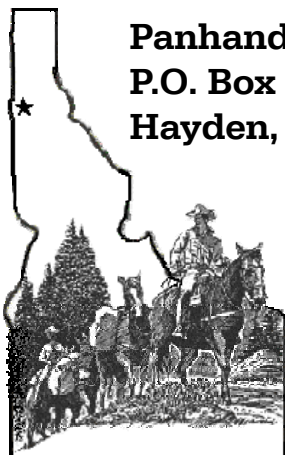
**COUNTRY**

**CARE**  
[www.countrysupply.com](http://www.countrysupply.com)

Our Care Code: **pbch**

Enter our Care Code and the club will get 5% of all sales (except on wormers and shipping).



**Panhandle Back Country Horsemen**  
**P.O. Box 1903**  
**Hayden, ID 83835**

Place  
Stamp  
Here

Monthly meetings have  
reverted back to the 3rd

## **SATURDAY**

Held in the Dalton Gardens  
City Hall.

Ya can  
hitch yer  
hoss at  
Hanley  
and 4th.



Place Label Here

**Next meetin'....**

**Saturday,**  
**NOVEMBER 21<sup>st</sup>**

Socializing 7:00  
Meeting 7:30

Enjoy some friendly  
conversation, hot coffee and  
snacks.



Heck fire... you  
might even  
win the door  
prize!

Sure would like to  
see ya thar...

Ol' Festus & the crew.

**Thanks to all of our  
members for supporting  
Panhandle Back  
Country Horsemen.  
We couldn't do it without  
YOU!**

## **NOVEMBER**

November 13th & 14th – Friday & Saturday  
BCHI 2009 STATE CONVENTION  
in Twin Falls

**21st – Saturday  
Regular Meeting**

## **DECEMBER**

**5th – Saturday  
Christmas Party**

Avondale Country Club  
10745 Avondale Loop Rd, Hayden Lake, ID  
Angela Parson - 208-640-3105, Trail Boss